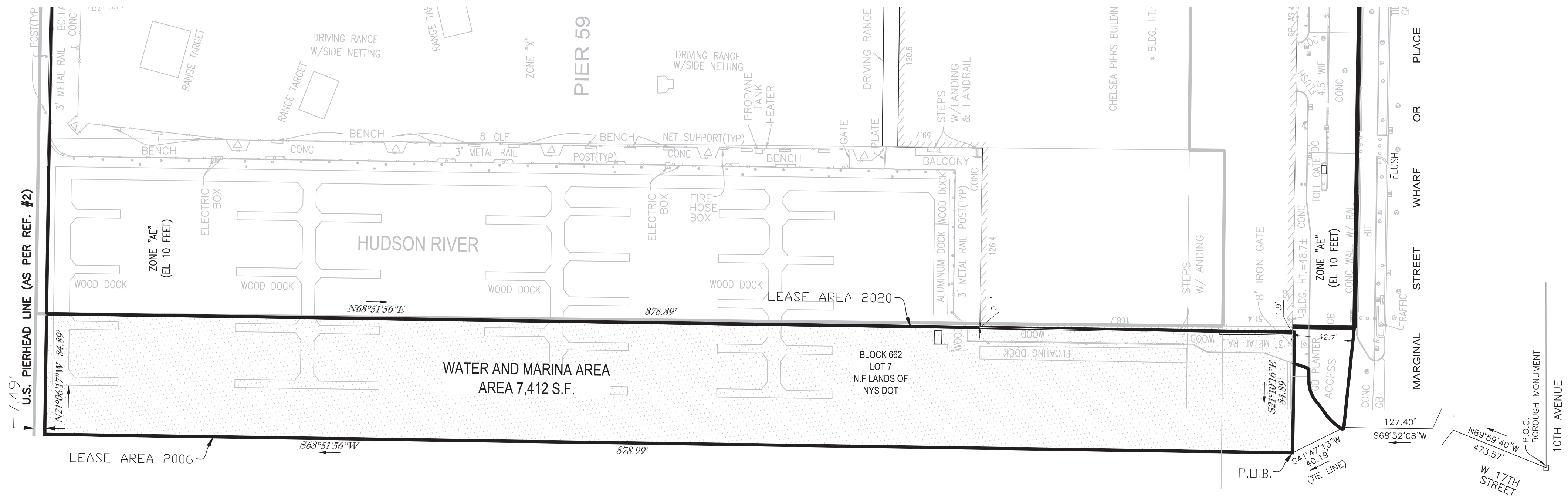
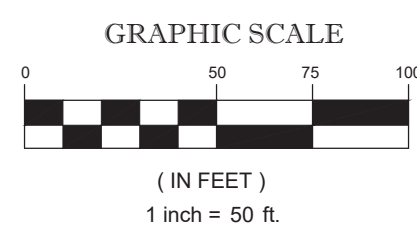


LOCATION MAP
(NOT TO SCALE)



- NOTES:**
- THIS PLAN IS BASED ON INFORMATION PROVIDED BY A SURVEY PREPARED IN THE FIELD BY CONTROL POINT ASSOCIATES, INC. AND OTHER REFERENCE MATERIAL AS LISTED HEREON.
 - WATER AND MARINE AREA = 7,412 S.F. OR 0.170 ACRES.
 - BOUNDARY INFORMATION SHOWN AS PER REFERENCE NO. 2 & 3
 - INTERIOR PARCEL ANGLES ARE APPROXIMATE, AND ARE CALCULATED AS PER TAX MAP GEOMETRY.
 - SUBJECT TO ANY RESTRICTIONS, COVENANTS AND/OR EASEMENTS OF RECORD.

- REFERENCES:**
- THE OFFICIAL TAX ASSESSOR'S MAP OF THE BOROUGH OF MANHATTAN, CITY, COUNTY AND STATE OF NEW YORK, SHEET #1 OF 1.
 - MAP ENTITLED "LEASE SURVEY CHELSEA PIERS 59, 60, 61, 62 & 63 (EASEMENT ACCESS), BOROUGH OF MANHATTAN, CITY, COUNTY AND STATE OF NEW YORK", PREPARED BY STANTEC CONSULTING INC., DATED 07-31-2006.
 - MAP ENTITLED "ALTA/NSPS LAND TITLE SURVEY, 59, 60, 61 & 61 CHELSEA PIERS, LOTS 11, 16, 19 AND 62, BLOCK 662, BOROUGH OF MANHATTAN, CITY, COUNTY AND STATE OF NEW YORK", PREPARED BY CONTROL POINT ASSOCIATES INC., PC, DATED 09-08-2017, LAST REVISED 08-19-2020.



NOT A VALID ORIGINAL DOCUMENT UNLESS WITH RAISED IMPRESSION OR BLUE INK

William T. Whimple
WILLIAM T. WHIMPLE
 NEW YORK PROFESSIONAL LAND SURVEYOR #050526

05.07.2021
 DATE

No.	REVISION	FIELD CREW	DRAWN	APPROVED	DATE
1	REVISED TIE DISTANCE	N/A	D.E.C.	W.T.W.	05-07-2021

FIELD DATE	WATER AND MARINA AREA EXHIBIT				
FIELD BOOK NO.	PART OF LOT 7, BLOCK 662				
FIELD BOOK PG.	BOROUGH OF MANHATTAN				
FIELD CREW	CITY, COUNTY AND STATE OF NEW YORK				
DRAWN:	CONTROL POINT ASSOCIATES INC. PC 2929 EXPRESSWAY DRIVE HAUPPAUGE, NY 11749 631.580.2645 - 908.668.9595 FAX WWW.CPASURVEY.COM				
D.E.C.					
REVIEWED:	APPROVED:	DATE	SCALE	FILE NO.	DWG. NO.
G.D.	W.T.W.	8.24.2020	1" = 50'	07-170171	1 OF 1

CONTROL POINT ASSOCIATES INC. IS AN EQUAL OPPORTUNITY AND AFFIRMATIVE ACTION EMPLOYER. ALL INFORMATION CONTAINED HEREIN IS THE PROPERTY OF CONTROL POINT ASSOCIATES INC. AND IS NOT TO BE REPRODUCED OR TRANSMITTED IN ANY FORM OR BY ANY MEANS, ELECTRONIC OR MECHANICAL, INCLUDING PHOTOCOPYING, RECORDING, OR BY ANY INFORMATION STORAGE AND RETRIEVAL SYSTEM, WITHOUT THE WRITTEN PERMISSION OF CONTROL POINT ASSOCIATES, INC. IS PROHIBITED.