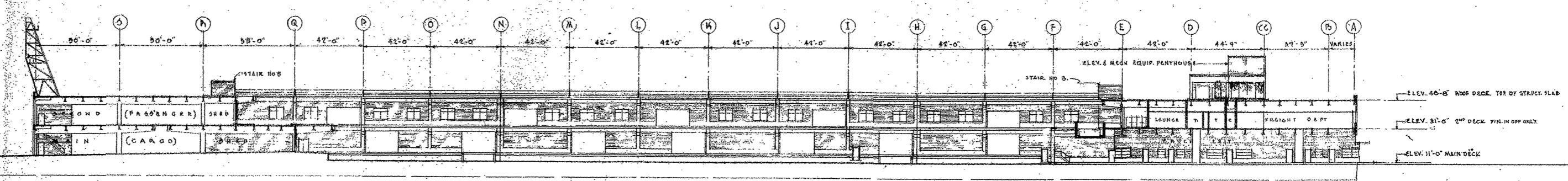
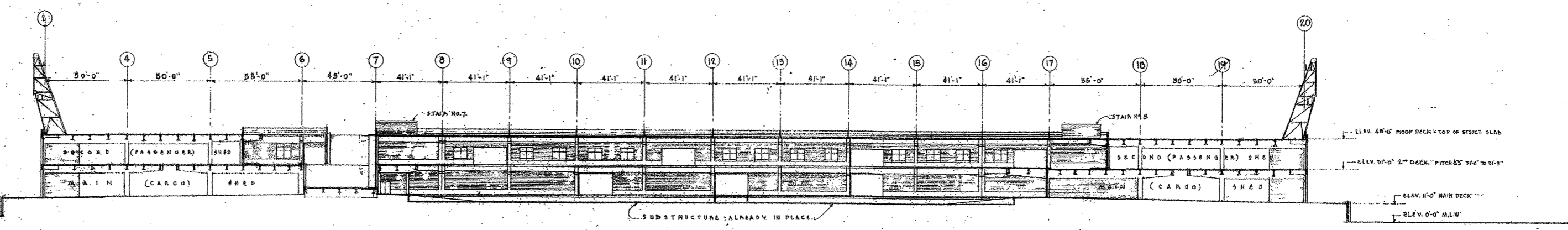


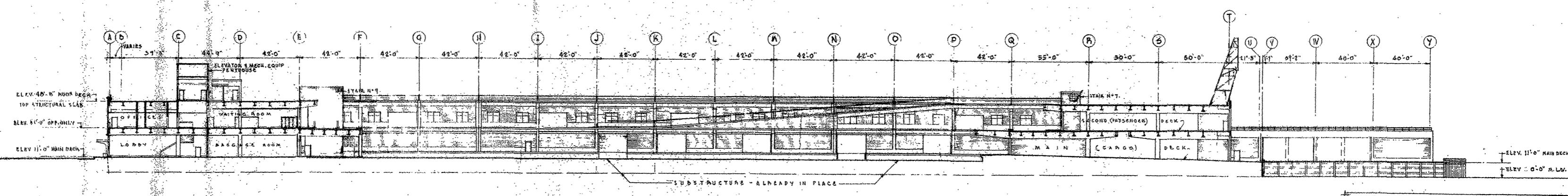
•• CROSS SECTION "A-A" LOOKING EAST ••
 SCALE 1/32" = 1'-0"
 FOR LOCATION SEE DWGS. A-2, A-3, & A-4.



•• CROSS SECTION "B-B" LOOKING NORTH ••
 SCALE 1/32" = 1'-0"
 FOR LOCATION SEE DWGS. A-2, A-3, & A-4.



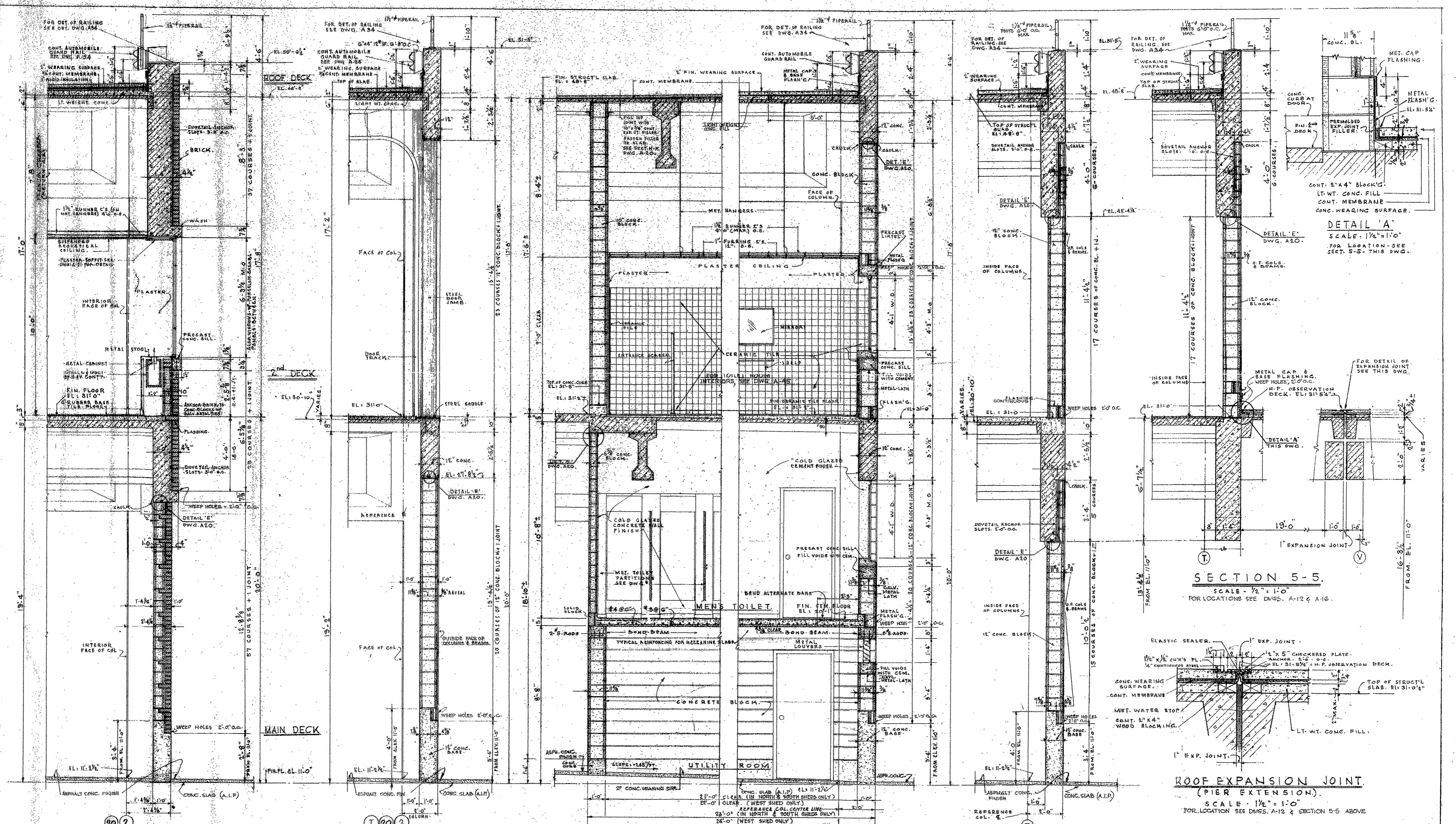
•• CROSS SECTION "C-C" LOOKING WEST ••
 SCALE 1/32" = 1'-0"
 FOR LOCATION SEE DWGS. A-2, A-3, & A-4.



•• CROSS SECTION "D-D" LOOKING SOUTH ••
 SCALE 1/32" = 1'-0"
 FOR LOCATION SEE DWGS. A-2, A-3, & A-4.

County MANHATTAN
 Block 656
 Lot 1

| | |
|--|---|
| THE CITY OF NEW YORK DEPARTMENT OF MARINE AND AVIATION | |
| NEW PIER 40 NORTH RIVER BOROUGH OF MANHATTAN | |
| ROBERTS AND SCHAEFER CO. CONSULTING ENGINEERS NEW YORK, N.Y. | IN CHARGE OF <i>E. P. Dewey</i> KARSUNKY, WELLS AND GOOCH MECHANICAL ENGINEERS NEW YORK, N.Y. |
| DRAWN BY S. T. BROWN | DRAWING NUMBER A 18 |
| TRACED BY D. R. BRESSO | CROSS SECTIONS |
| CHECKED BY D. R. BRESSO | DATE 6-2-60 |
| SCALE 1/32" = 1'-0" | CONTRACT NO. 3069.A |



SECTION 1-1
SCALE: 1/2" = 1'-0"
FOR LOCATION SEE DWGS. A-5, A-6, A-9, A-10, A-13 & A-14

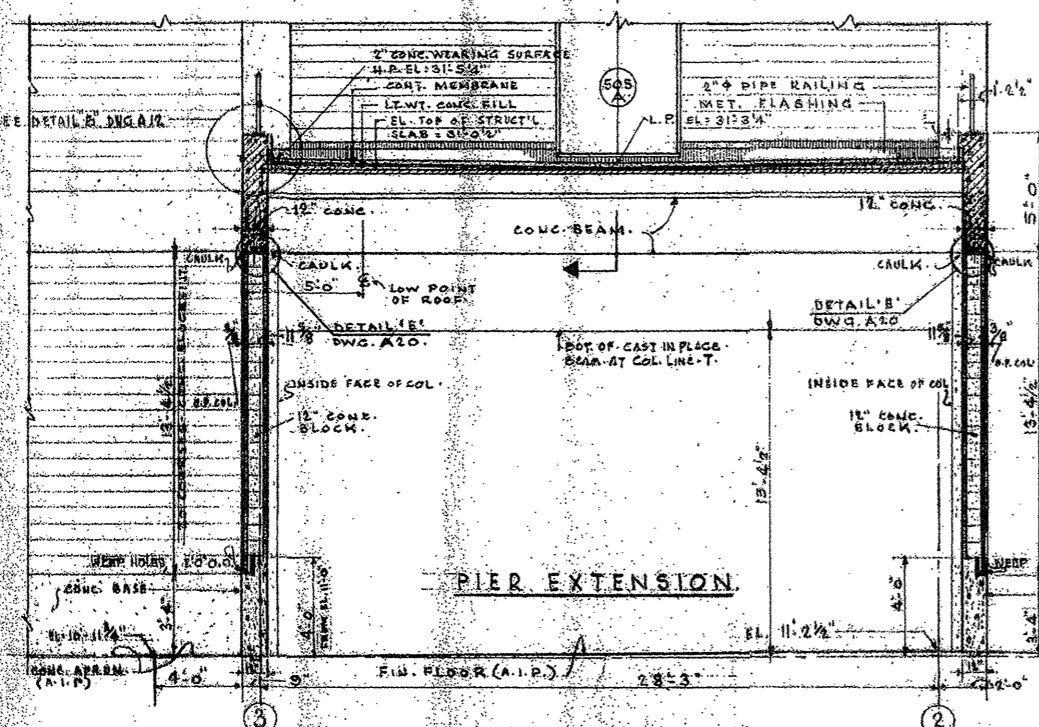
SECTION 2-2
SCALE: 1/2" = 1'-0"
FOR LOCATION SEE DWG. A-4 TRU A-12

SECTION 3-3
SCALE: 1/2" = 1'-0"
FOR LOCATIONS SEE DRAWINGS A-7, A-8, A-11, A-12, A-13 & A-17

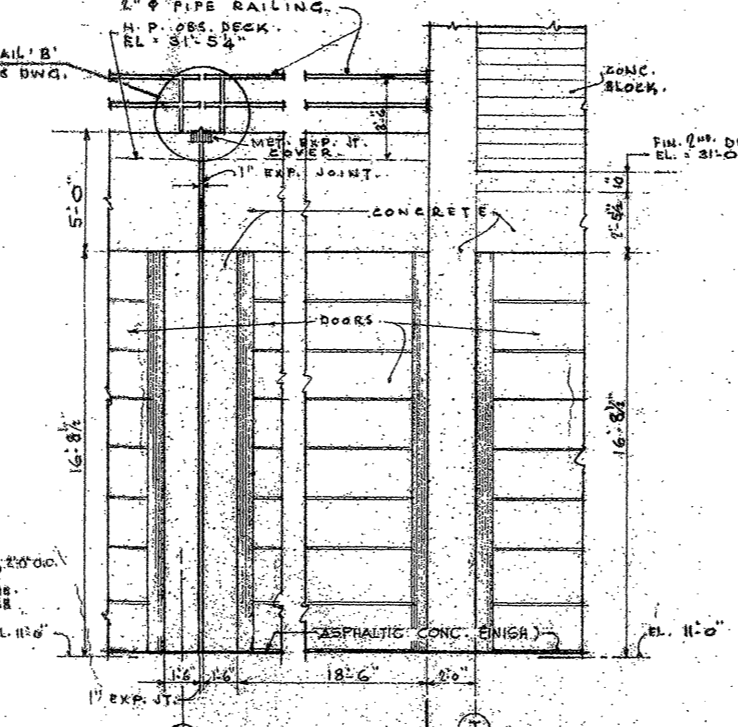
SECTION 4-4
SCALE: 1/2" = 1'-0"
FOR LOCATION SEE DWGS. A-7, A-11 & A-15

SECTION 5-5
SCALE: 1/2" = 1'-0"
FOR LOCATIONS SEE DWGS. A-12 & A-16

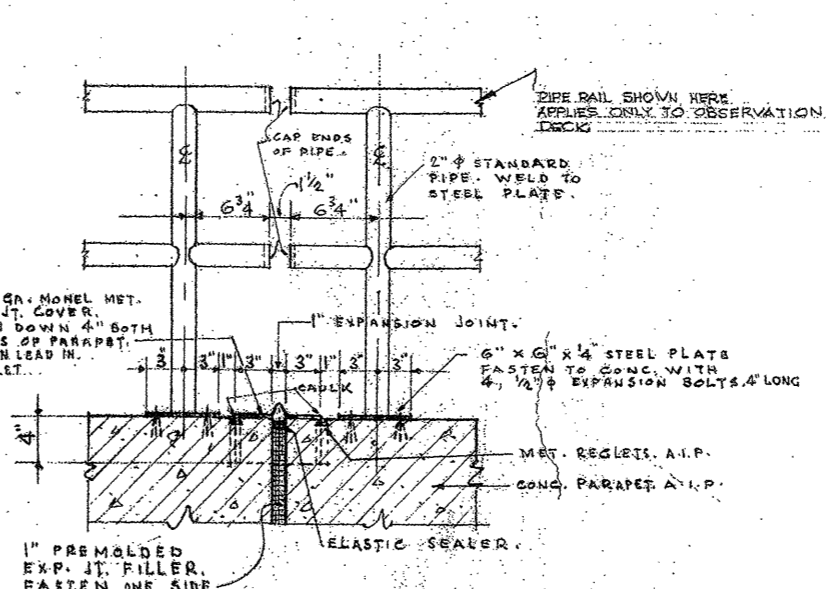
ROOF EXPANSION JOINT (PIER EXTENSION)
SCALE: 1/2" = 1'-0"
FOR LOCATION SEE DWGS. A-12 & SECTION 5-5 ABOVE



SECTION G-G
SCALE: 1/2" = 1'-0"
FOR LOCATION SEE DWGS. A-8 & A-12



PART SOUTH ELEVATION
SCALE: 1/2" = 1'-0"
FOR LOCATION SEE SOUTH ELEVATION ON DWG. A-17

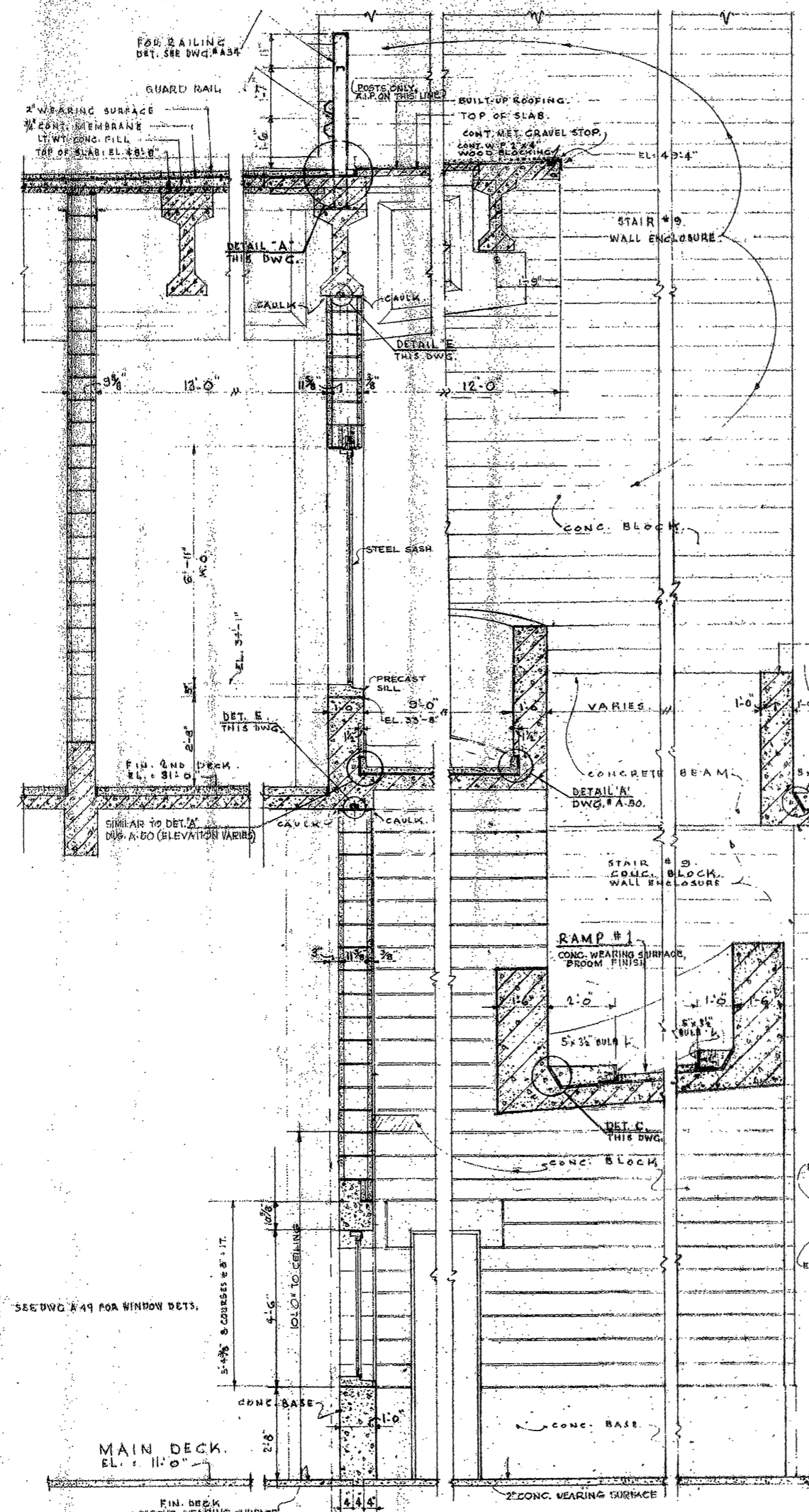


DETAIL B
SCALE: 1/2" = 1'-0"
FOR LOCATION SEE DET. LOCATIONS ON DRAWINGS SEE DWGS. A-13 THRU A-18

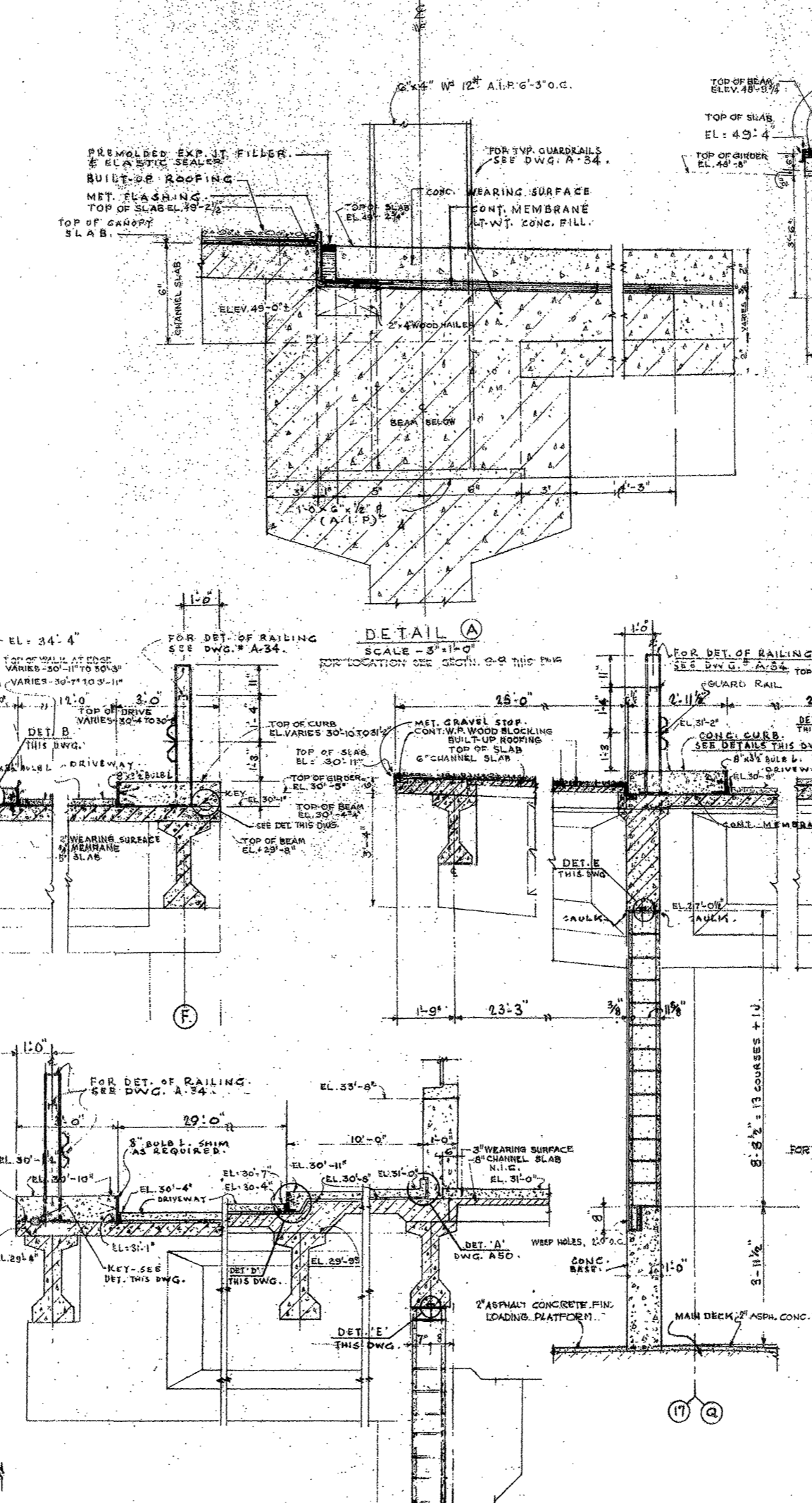
NOTE: EXPANSION JOINT COVER DETAILED ABOVE IS TYPICAL FOR ALL CONC. PARAPETS EXCEPT AT EAST WALL. FOR EXP. JT. COVERS AT EAST WALL SEE DWG. A-22.

County Manhattan
Book 656
Lot 1

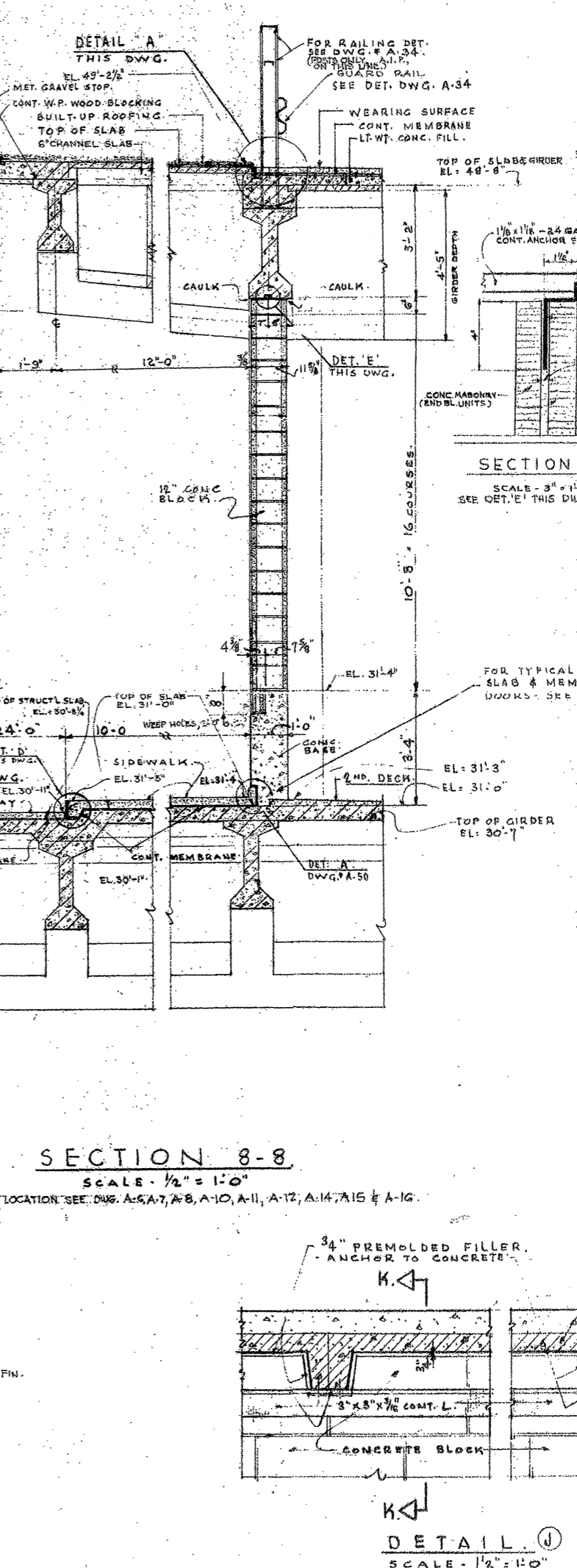
| | |
|--|---|
| THE CITY OF NEW YORK DEPARTMENT OF MARINE AND AVIATION | |
| NEW PIER 40 NORTH RIVER BOROUGH OF MANHATTAN | |
| ROBERTS AND SCHAEFER CO. CONSULTING ENGINEERS NEW YORK, N.Y. | IN CHARGE OF <i>E. T. Murphy</i> MECHANICAL ENGINEERS NEW YORK, N.Y. |
| SECTIONS OF EXTERIOR WALL (1) | |
| DRAWN BY T. B. G. TRACED BY S. J. S. | DRAWING NUMBER A-19. |
| CHECKED BY D. R. SESSO | DATE 2-2-1960 SCALE AS SHOWN CONTRACT NO. 3060-A |



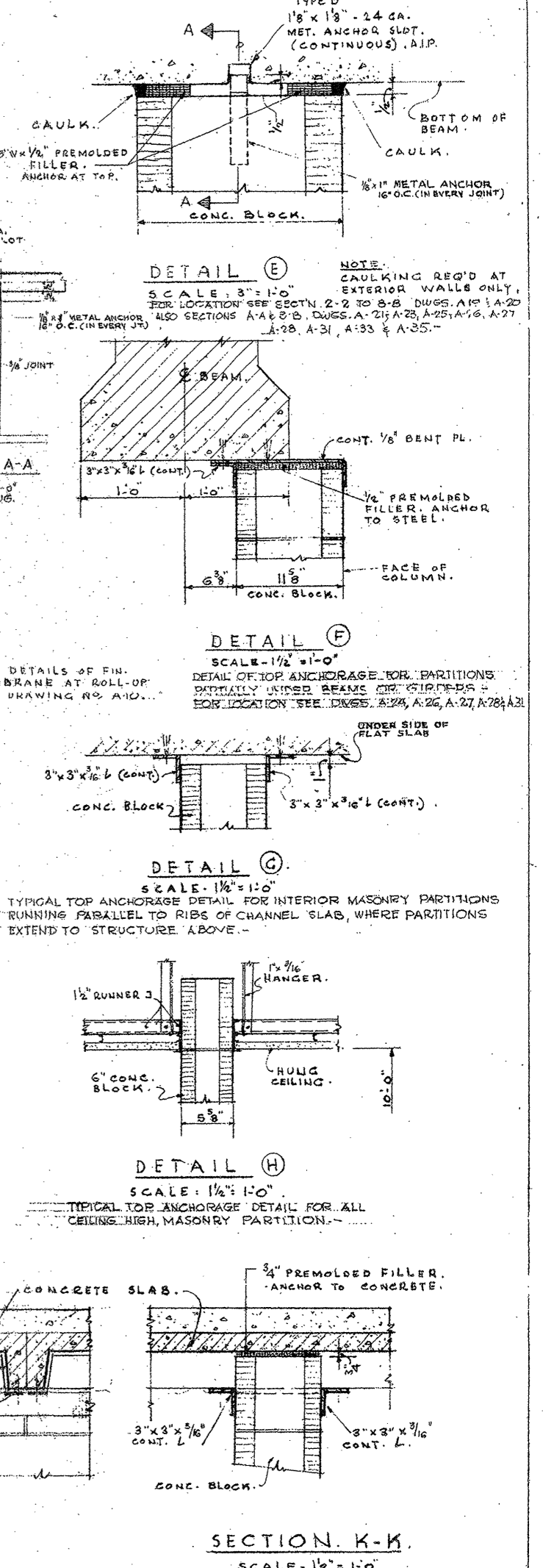
SECTION 7-7
SCALE: 1/2" = 1'-0"
FOR LOCATION SEE DWGS. A-10 & A-9



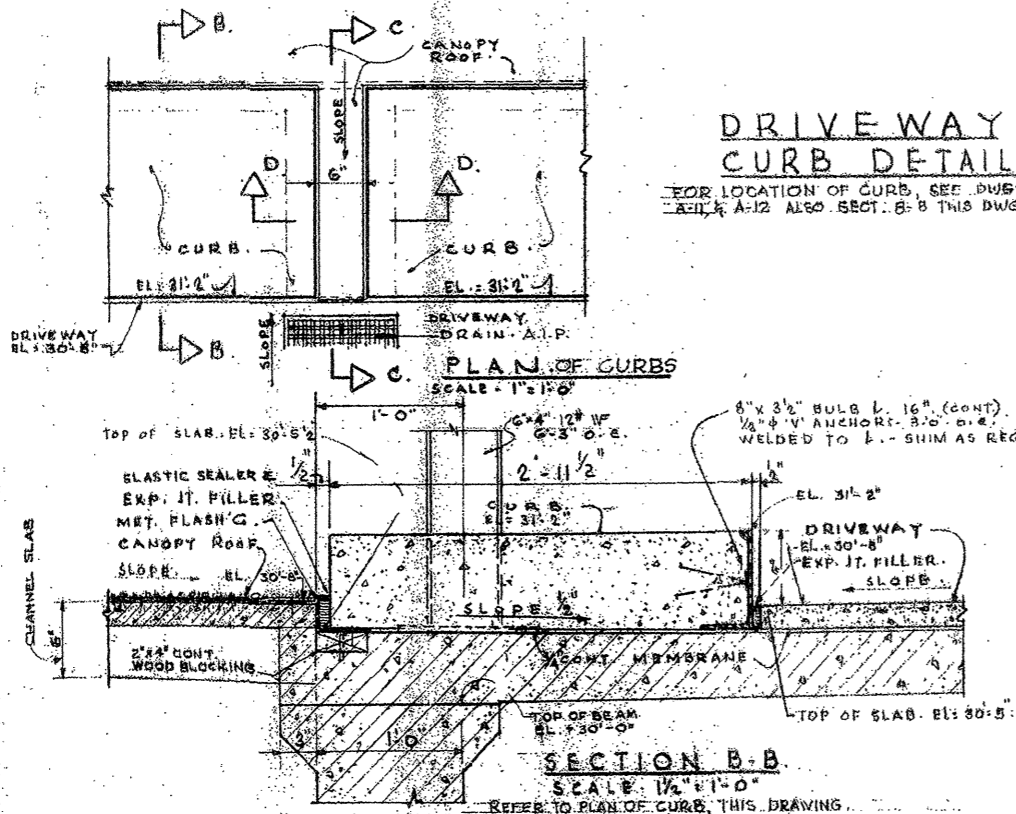
SECTION 7A-7A
SCALE: 1/2" = 1'-0"
FOR LOCATION SEE DWG. A-10



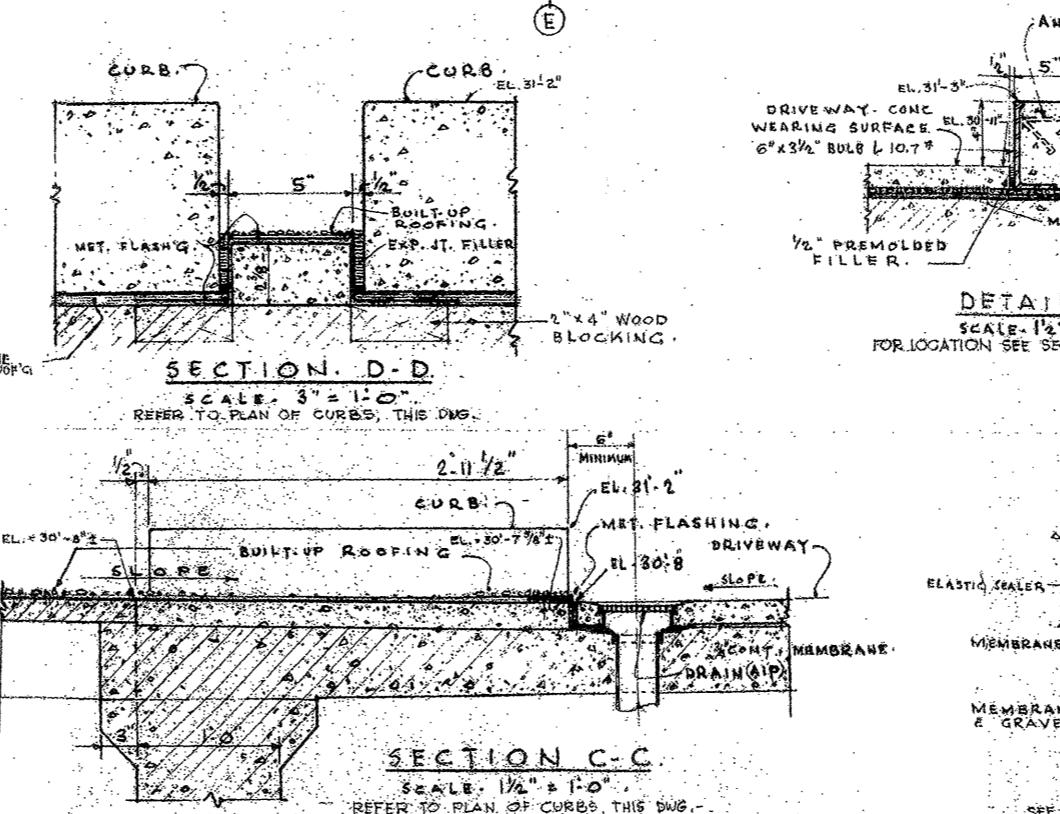
SECTION 8-8
SCALE: 1/2" = 1'-0"
FOR LOCATION SEE DWGS. A-10, A-11, A-12, A-14, A-15 & A-16



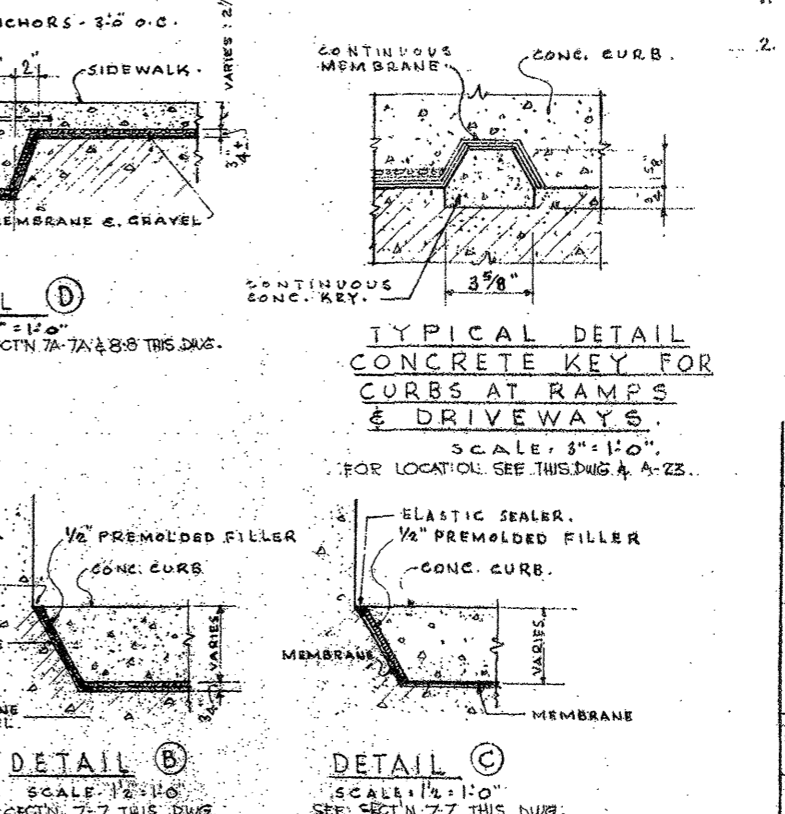
TYPICAL WALL BRACING DETAILS.
SCALE: 1/2" = 1'-0"
NOTE: 1. STRUCTURAL CONCRETE INSTALLED UNDER PREVIOUS CONTRACT, HAS BEEN INDICATED THIS WAY. 2. INTERRUPT CONCRETE KEY ST. GUARD RAILS.



DRIVEWAY CURB DETAILS.
FOR LOCATION OF CURB, SEE DWGS. A-10, A-11 & A-12 ALSO SECT. 8-8 THIS DWG.



SECTION D-D
SCALE: 3/4" = 1'-0"
REFER TO PLAN OF CURBS, THIS DWG.



TYPICAL DETAIL CONCRETE KEY FOR CURBS & DRIVEWAYS.
SCALE: 1/2" = 1'-0"
FOR LOCATION SEE SECTN. 7A-7A & 8-8 THIS DWG.

County *Manhattan*
Block *656*

City of New York
DEPARTMENT OF MARINE AND AVIATION

NEW PIER 40
NORTH RIVER
BOROUGH OF MANHATTAN

ROBERTS AND SCHAEFER CO.
CONSULTING ENGINEERS NEW YORK, N.Y.

KARSUNKY, WELLER AND GOOCH
MECHANICAL ENGINEERS NEW YORK, N.Y.

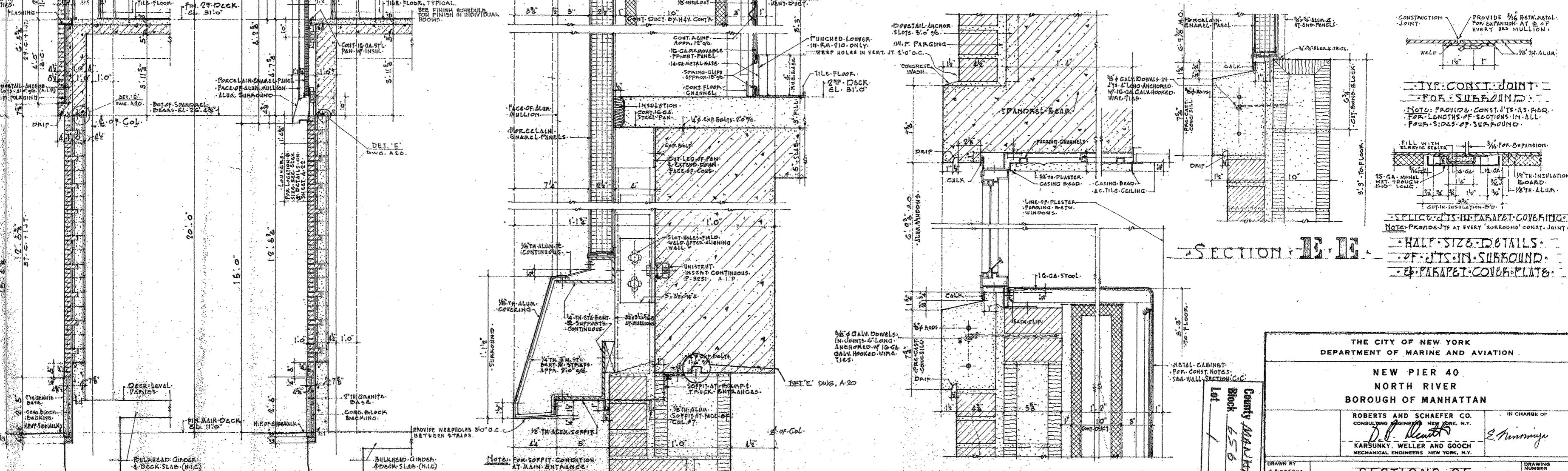
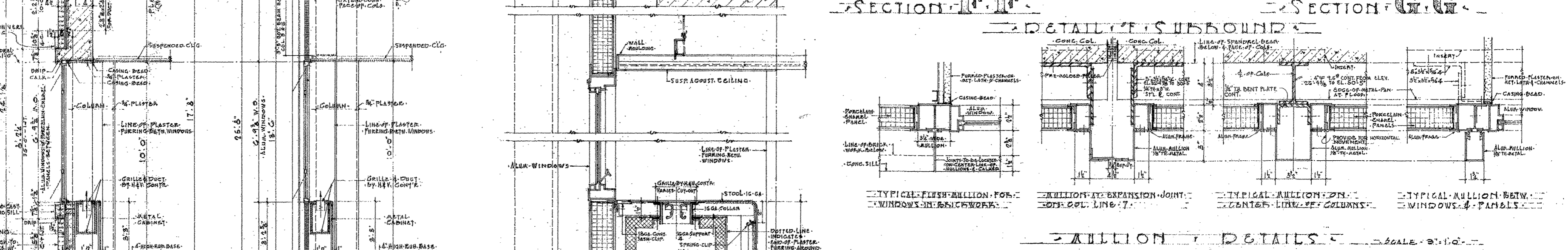
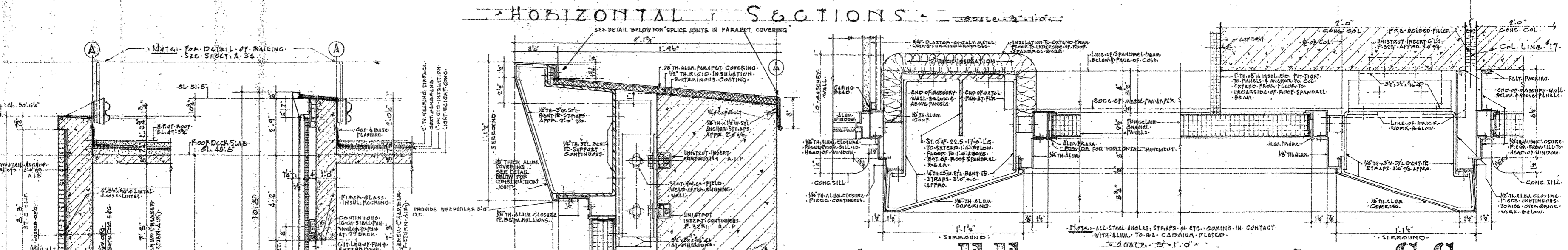
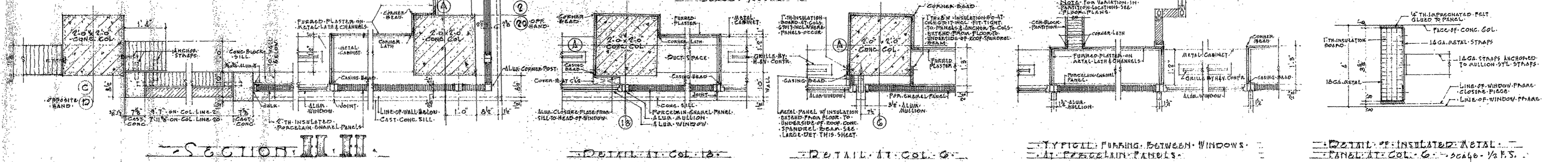
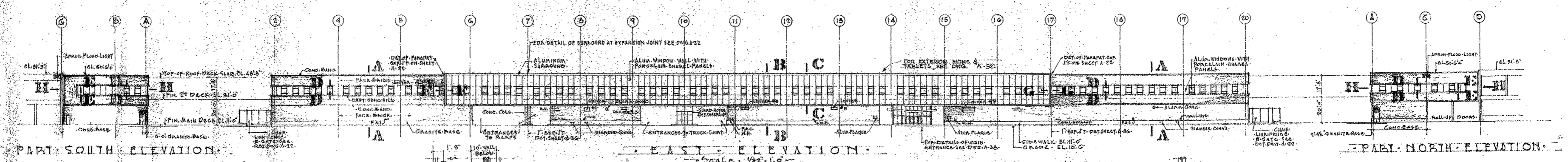
IN CHARGE OF *[Signature]*

SECTIONS OF EXTERIOR WALLS.
(2)

DRAWN BY J.A.G.
TRACED BY
CHECKED BY J.R. SESSO
DATE: 2-2-60

DRAWING NUMBER A-20.

SCALE: 1/2" = 1'-0"
CONTRACT NO. 3060-A



THE CITY OF NEW YORK
DEPARTMENT OF MARINE AND AVIATION

NEW PIER 40
NORTH RIVER
BOROUGH OF MANHATTAN

ROBERTS AND SCHAEFER CO.
CONSULTING ENGINEERS
NEW YORK, N.Y.

KARSUNKY, WELER AND GOOCH
MECHANICAL ENGINEERS
NEW YORK, N.Y.

IN CHARGE OF
E. Manning

DRAWN BY
T. BOYD

TRACED BY
D. J. [Signature]

CHECKED BY
D.R. SASSO

DATE
2-2-60

SCALE
AS SHOWN

CONTRACT NO.
3060-A

COUNTY
MANHATTAN

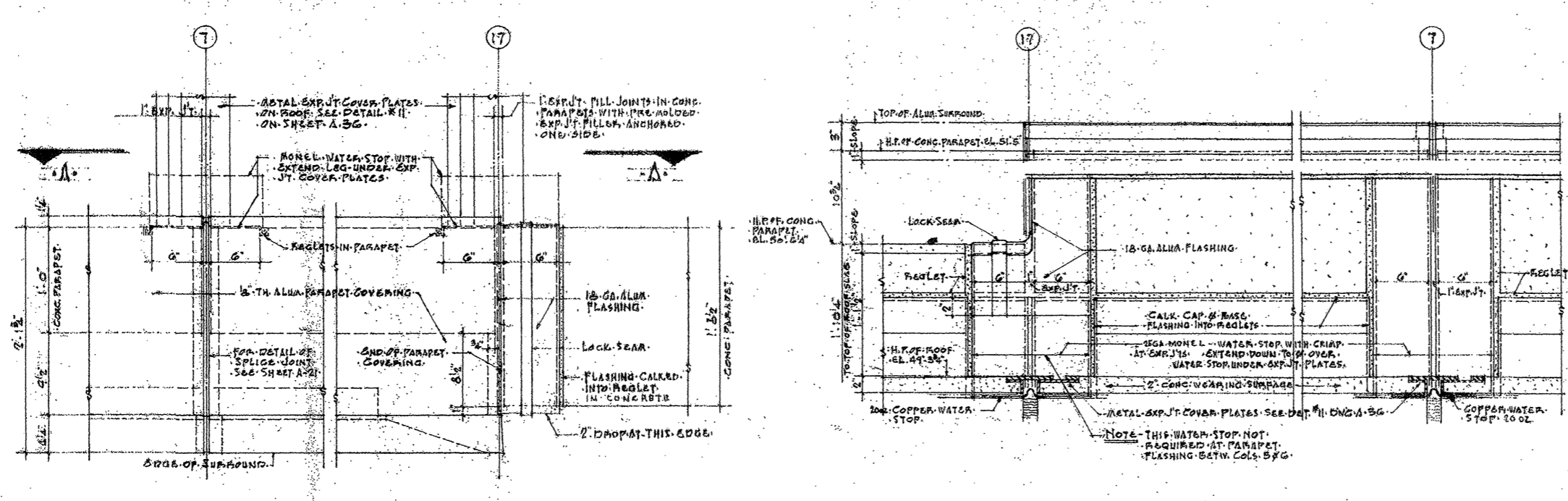
Block
656

Lot
1

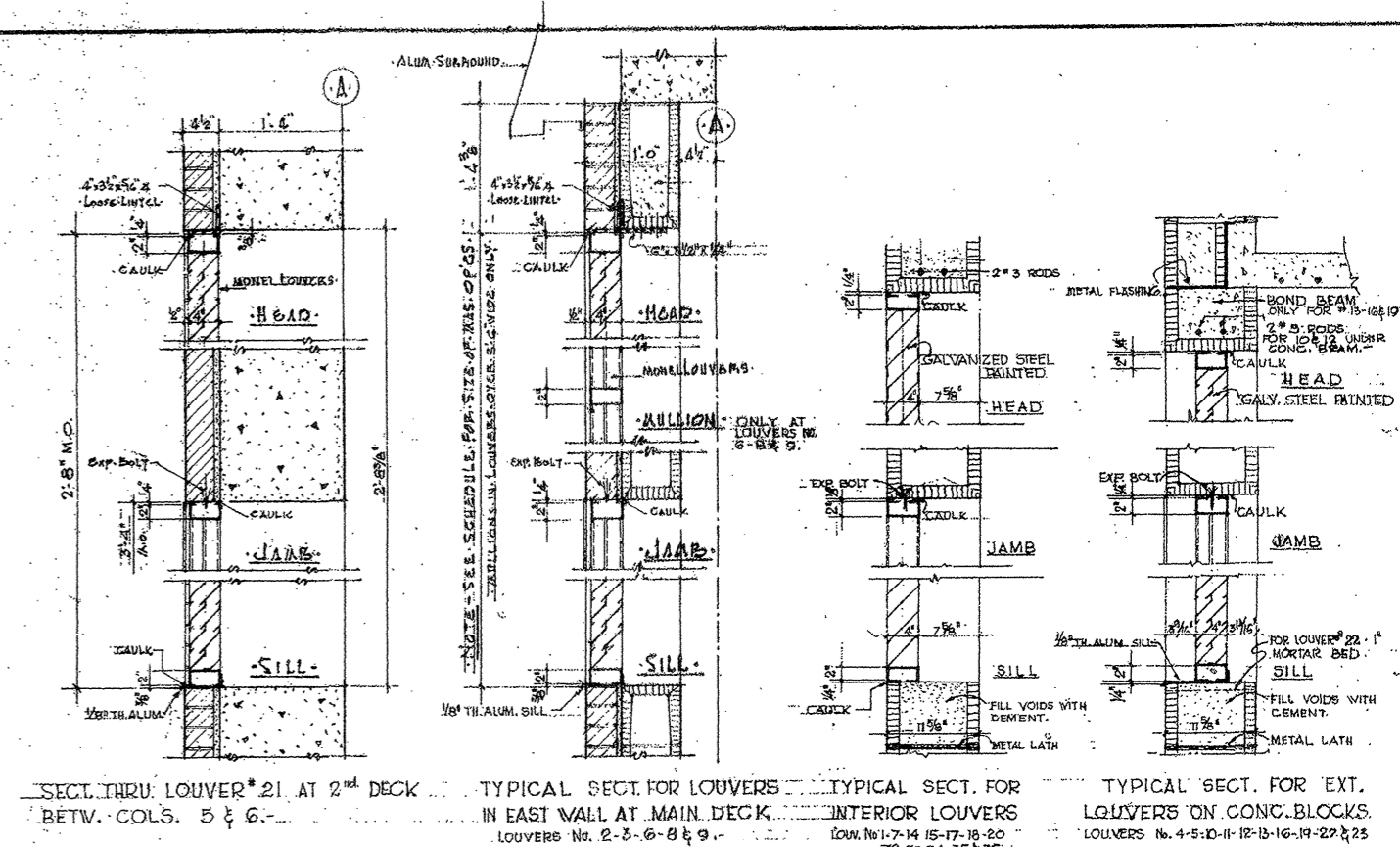
SECTIONS OF
EXTERIOR WALL
(3)

A 21

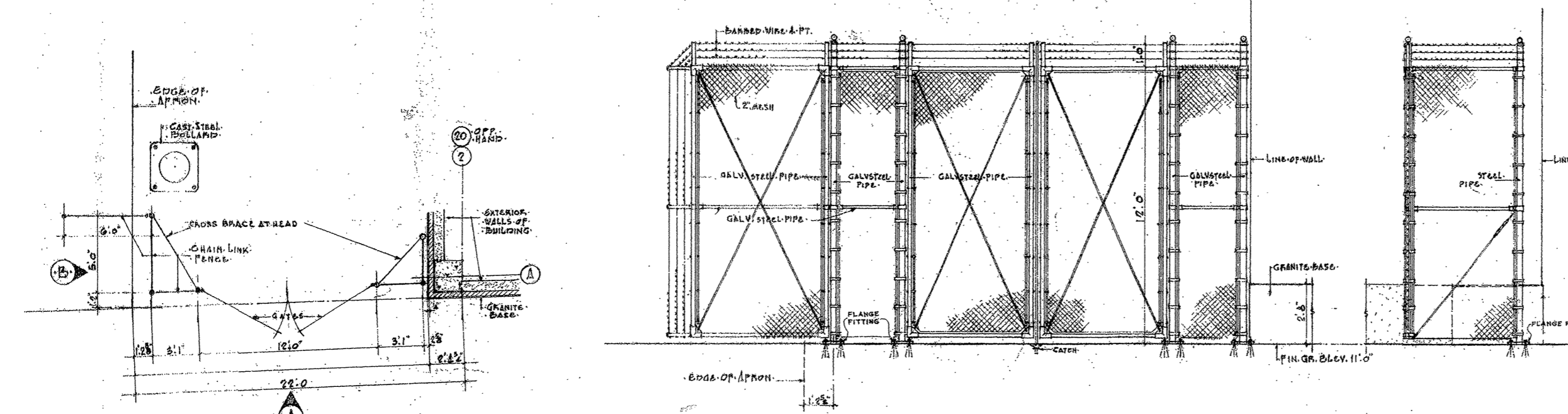
35



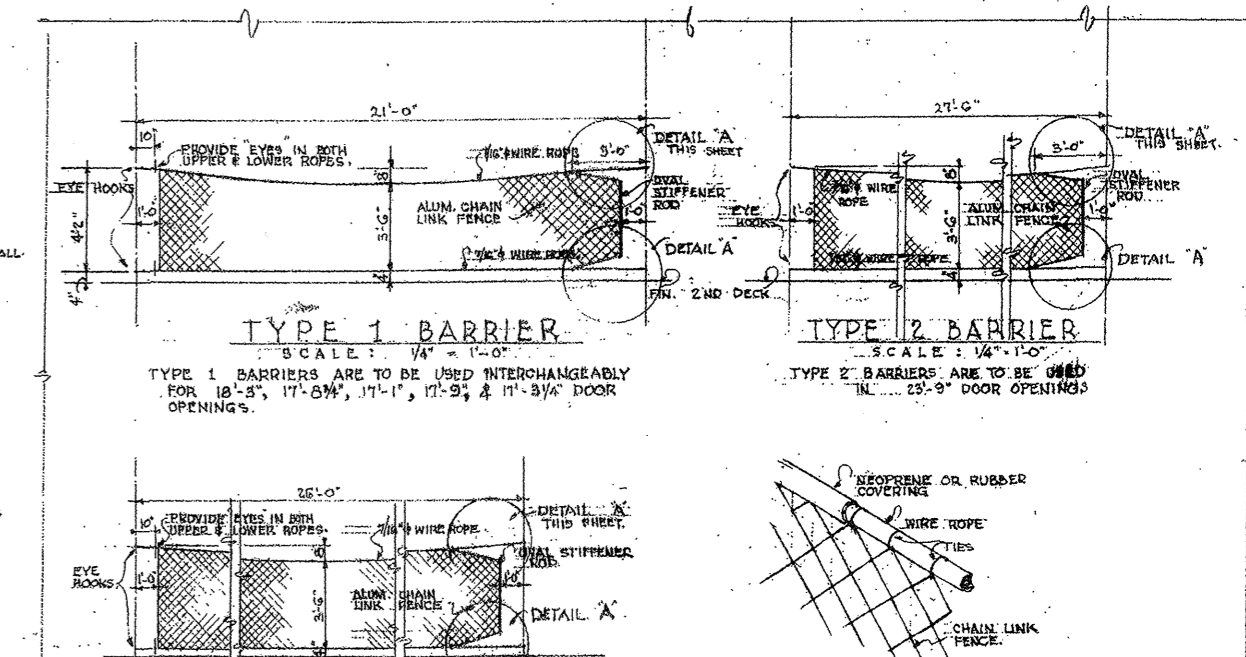
REAR VIEW OF PARAPET WALL
DETAIL OF EXP. JTS. IN PARAPET COVERING AT FRONT WALL



TYPICAL LOUVERS DETAILS

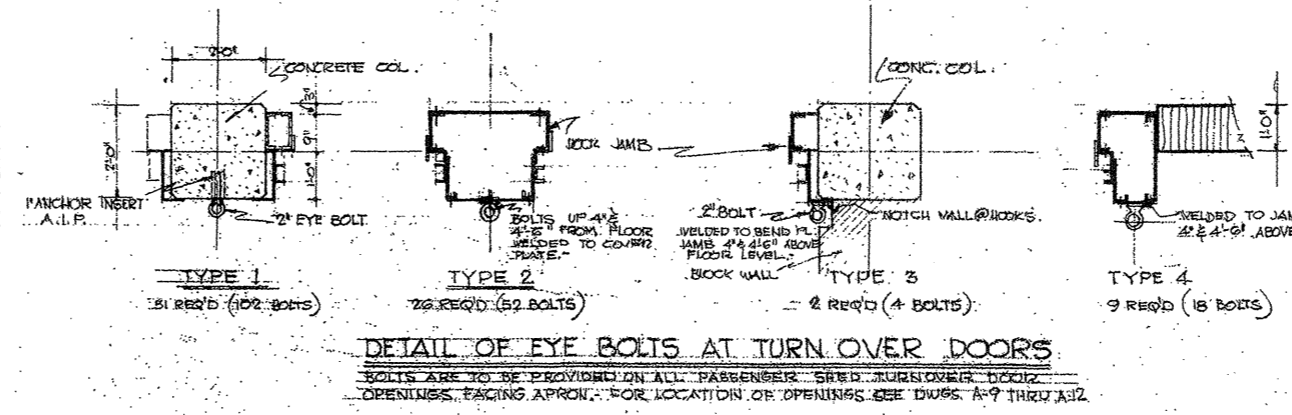


PLAN - SOUTH FENCE
ELEV. A
ELEV. B



TYPE 1 BARRIER
TYPE 2 BARRIER
TYPE 3 BARRIER
DETAIL OF COVER & TIES TO UPPER ROPE

| LOUVER NO. | EQUIPMENT UNIT | EQUIPMENT LOCATION | LOUVER SIZE OR DIMENSION | ELEVAT. FROM EDGE | DISCHARGE | LOUVER TYPE | DUCT SIZE | REMARKS |
|------------|----------------|---------------------------|--------------------------|-------------------|-------------|-------------|-----------|-------------------------|
| 1 | RAIL PAN # 17 | SO. WALL MAINTENANCE SHOP | 14" x 14" | 12' 0" | EXH. | EXT. | 12" x 12" | METAL SILL UNDER LOUVER |
| 2 | AC. UNIT # 1 | EAST WALL 2ND DECK | 24" x 20" | 12' 0" | F.A. INTAKE | EXT. | 24" x 20" | METAL SILL UNDER LOUVER |
| 3 | AC. UNIT # 2 | EAST WALL 2ND DECK | 24" x 20" | 12' 0" | DISCHARGE | EXT. | 24" x 20" | METAL SILL UNDER LOUVER |
| 4 | AC. UNIT # 3 | EAST WALL 2ND DECK | 24" x 20" | 12' 0" | DISCHARGE | EXT. | 24" x 20" | METAL SILL UNDER LOUVER |
| 5 | AC. UNIT # 4 | EAST WALL 2ND DECK | 24" x 20" | 12' 0" | DISCHARGE | EXT. | 24" x 20" | METAL SILL UNDER LOUVER |
| 6 | AC. UNIT # 5 | EAST WALL 2ND DECK | 24" x 20" | 12' 0" | DISCHARGE | EXT. | 24" x 20" | METAL SILL UNDER LOUVER |
| 7 | RAIL PAN # 18 | NORTH WALL 2ND DECK | 14" x 14" | 12' 0" | EXH. | EXT. | 12" x 12" | METAL SILL UNDER LOUVER |
| 8 | AC. UNIT # 6 | LINE 2ND DECK @ LINE | 24" x 20" | 12' 0" | F.A. INTAKE | EXT. | 24" x 20" | METAL SILL UNDER LOUVER |
| 9 | AC. UNIT # 7 | LINE 2ND DECK @ LINE | 24" x 20" | 12' 0" | F.A. INTAKE | EXT. | 24" x 20" | METAL SILL UNDER LOUVER |
| 10 | RAIL PAN # 7 | LINE 2ND DECK @ LINE | 14" x 14" | 12' 0" | EXH. | EXT. | 12" x 12" | METAL SILL UNDER LOUVER |
| 11 | RAIL PAN # 8 | LINE 2ND DECK @ LINE | 14" x 14" | 12' 0" | EXH. | EXT. | 12" x 12" | METAL SILL UNDER LOUVER |
| 12 | RAIL PAN # 9 | LINE 2ND DECK @ LINE | 14" x 14" | 12' 0" | EXH. | EXT. | 12" x 12" | METAL SILL UNDER LOUVER |
| 13 | RAIL PAN # 10 | LINE 2ND DECK @ LINE | 14" x 14" | 12' 0" | EXH. | EXT. | 12" x 12" | METAL SILL UNDER LOUVER |
| 14 | RAIL PAN # 11 | LINE 2ND DECK @ LINE | 14" x 14" | 12' 0" | EXH. | EXT. | 12" x 12" | METAL SILL UNDER LOUVER |
| 15 | RAIL PAN # 12 | LINE 2ND DECK @ LINE | 14" x 14" | 12' 0" | EXH. | EXT. | 12" x 12" | METAL SILL UNDER LOUVER |
| 16 | RAIL PAN # 13 | LINE 2ND DECK @ LINE | 14" x 14" | 12' 0" | EXH. | EXT. | 12" x 12" | METAL SILL UNDER LOUVER |
| 17 | RAIL PAN # 14 | LINE 2ND DECK @ LINE | 14" x 14" | 12' 0" | EXH. | EXT. | 12" x 12" | METAL SILL UNDER LOUVER |
| 18 | RAIL PAN # 15 | LINE 2ND DECK @ LINE | 14" x 14" | 12' 0" | EXH. | EXT. | 12" x 12" | METAL SILL UNDER LOUVER |
| 19 | RAIL PAN # 16 | LINE 2ND DECK @ LINE | 14" x 14" | 12' 0" | EXH. | EXT. | 12" x 12" | METAL SILL UNDER LOUVER |
| 20 | AC. UNIT # 8 | EAST END OF 2ND DECK | 24" x 20" | 12' 0" | DISCHARGE | INT. | 24" x 20" | METAL SILL UNDER LOUVER |
| 21 | AC. UNIT # 9 | LINE 14TH N. OF 2ND DECK | 24" x 20" | 12' 0" | DISCHARGE | EXT. | 24" x 20" | METAL SILL UNDER LOUVER |
| 22 | RAIL PAN # 20 | LINE 14TH N. OF 2ND DECK | 14" x 14" | 12' 0" | EXH. | EXT. | 12" x 12" | METAL SILL UNDER LOUVER |
| 23 | RAIL PAN # 21 | LINE 14TH N. OF 2ND DECK | 14" x 14" | 12' 0" | EXH. | EXT. | 12" x 12" | METAL SILL UNDER LOUVER |
| 24 | RAIL PAN # 22 | LINE 14TH N. OF 2ND DECK | 14" x 14" | 12' 0" | EXH. | EXT. | 12" x 12" | METAL SILL UNDER LOUVER |
| 25 | RAIL PAN # 23 | LINE 14TH N. OF 2ND DECK | 14" x 14" | 12' 0" | EXH. | EXT. | 12" x 12" | METAL SILL UNDER LOUVER |
| 26 | RAIL PAN # 24 | LINE 14TH N. OF 2ND DECK | 14" x 14" | 12' 0" | EXH. | EXT. | 12" x 12" | METAL SILL UNDER LOUVER |
| 27 | RAIL PAN # 25 | LINE 14TH N. OF 2ND DECK | 14" x 14" | 12' 0" | EXH. | EXT. | 12" x 12" | METAL SILL UNDER LOUVER |
| 28 | AC. UNIT # 10 | HOUSE EAST WALL | 24" x 20" | 12' 0" | DISCHARGE | EXT. | 24" x 20" | METAL SILL UNDER LOUVER |
| 29 | RAIL PAN # 26 | HOUSE EAST WALL | 14" x 14" | 12' 0" | EXH. | EXT. | 12" x 12" | METAL SILL UNDER LOUVER |
| 30 | RAIL PAN # 27 | HOUSE WEST WALL | 14" x 14" | 12' 0" | EXH. | EXT. | 12" x 12" | METAL SILL UNDER LOUVER |
| 31 | RAIL PAN # 28 | HOUSE WEST WALL | 14" x 14" | 12' 0" | EXH. | EXT. | 12" x 12" | METAL SILL UNDER LOUVER |
| 32 | RAIL PAN # 29 | HOUSE WEST WALL | 14" x 14" | 12' 0" | EXH. | EXT. | 12" x 12" | METAL SILL UNDER LOUVER |
| 33 | RAIL PAN # 30 | HOUSE WEST WALL | 14" x 14" | 12' 0" | EXH. | EXT. | 12" x 12" | METAL SILL UNDER LOUVER |
| 34 | RAIL PAN # 31 | HOUSE WEST WALL | 14" x 14" | 12' 0" | EXH. | EXT. | 12" x 12" | METAL SILL UNDER LOUVER |
| 35 | RAIL PAN # 32 | HOUSE WEST WALL | 14" x 14" | 12' 0" | EXH. | EXT. | 12" x 12" | METAL SILL UNDER LOUVER |
| 36 | RAIL PAN # 33 | HOUSE WEST WALL | 14" x 14" | 12' 0" | EXH. | EXT. | 12" x 12" | METAL SILL UNDER LOUVER |



DETAIL OF EYE BOLTS AT TURN OVER DOORS

1) THIS CONTRACTOR SHALL FURNISH OUTSHORE DOOR BARRIERS FOR THE PASSENGER DECK IN THE FOLLOWING NUMBERS: TYPE 1 - 20 UNITS; TYPE 2 - 2 UNITS; AND TYPE 3 - 3 UNITS.
 2) THIS CONTRACTOR SHALL FURNISH AND INSTALL 176 EYE BOLTS ON COLUMNS AND MULLIONS TO SUSPEND BARRIERS. ANCHORS ARE TO BE INSTALLED TO RESIST A STRESS OF 6000 #.

DETAILS OF PORTABLE BARRIER FOR USE ON PASSENGER DECK

THE CITY OF NEW YORK
 DEPARTMENT OF MARINE AND AVIATION
 NEW PIER 40
 NORTH RIVER
 BOROUGH OF MANHATTAN

ROBERTS AND SCHAEFER CO.
 CONSULTING ENGINEERS NEW YORK, N.Y.
 IN CHARGE OF
 KARSUNKY, WELER AND GOCH
 MECHANICAL ENGINEERS NEW YORK, N.Y.

County MANHATTAN
 Block 656
 Lot 1

DRAWN BY
 7. BOTTONE
 CHECKED BY
 MISCCELLANEOUS DETAILS
 A-22
 DATE 2-2-60 SCALE AS NOTED CONTRACT NO. 3080 A