

# **PLANKTON IDENTIFICATION GUIDE**



Diatom  
*Pseudo-nitzschia*



Copepod nauplii



Coccolithophore



Diatom  
*Chaetoceros*



Amoeba



Dinoflagellate  
*Amphidinium*



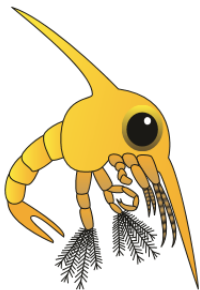
Diatom  
*Cyclotella*



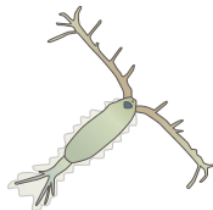
Dinoflagellate  
*Ceratium*



Cyanobacteria



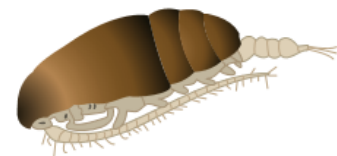
Crab zoea



Copepod  
*Acartia*



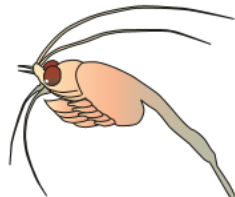
Ciliate  
*Didinium*



Copepod  
*Paracalanus*



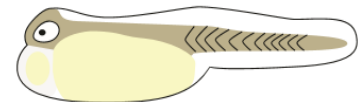
Dinoflagellate  
*Dinophysis*



Mysid shrimp



Crab eggs



Fish Larvae