

**Turner. & CRUZ**  
a joint venture

ResilienCity Community Partners  
A Turner & EE Cruz Joint Venture

**North/West  
Battery Park City  
Resiliency Project  
Hudson River Park  
Advisory Council**

JUNE 13, 2023





# A Piece of a Connected & Resilient Waterfront





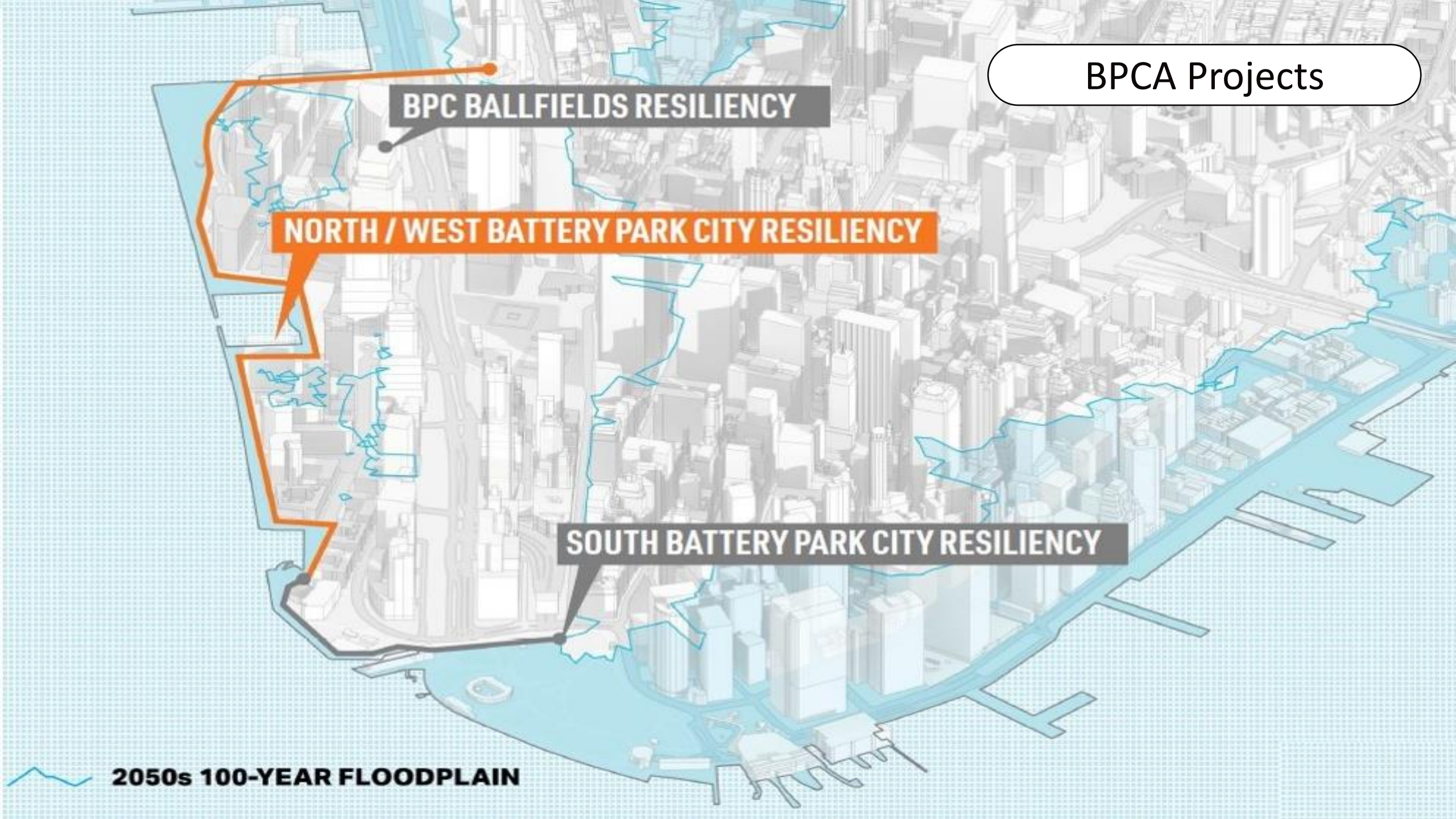
BPCA Projects

**BPC BALLFIELDS RESILIENCY**

**NORTH / WEST BATTERY PARK CITY RESILIENCY**

**SOUTH BATTERY PARK CITY RESILIENCY**

**2050s 100-YEAR FLOODPLAIN**



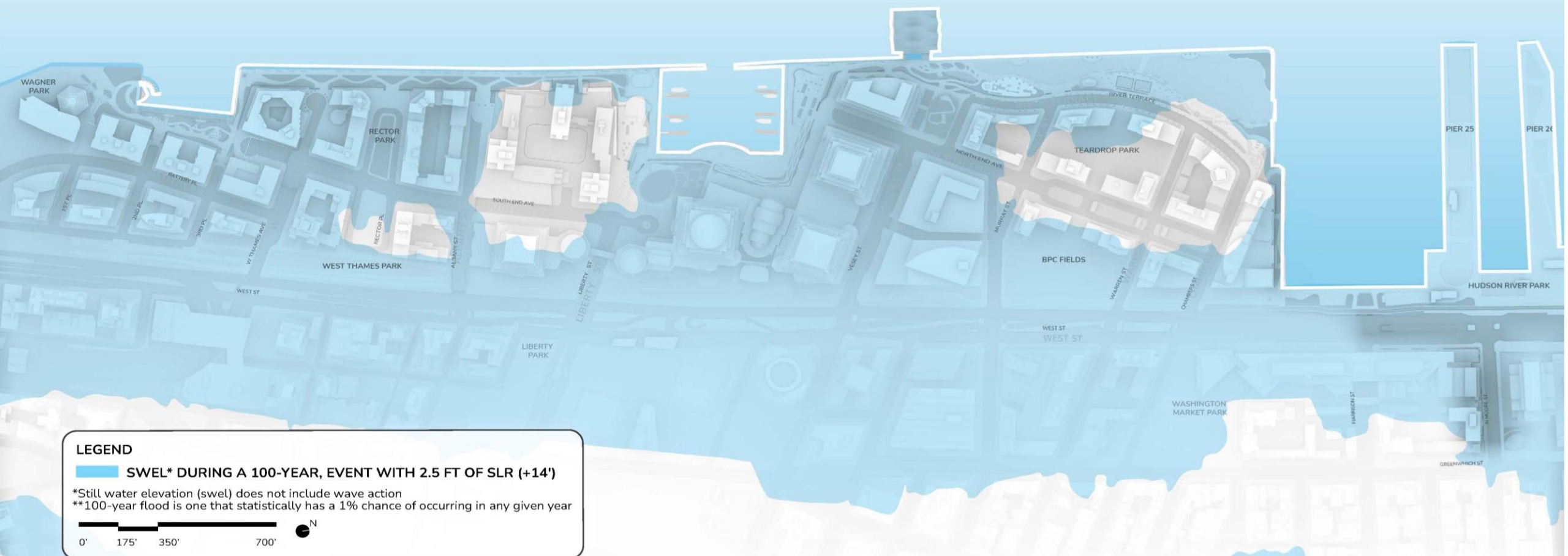
1. Introduction & Walkthrough of Alignment
2. Reach 1 Review and Discussion
3. Reach 2 Review and Discussion
4. Ongoing Agency Coordination
5. Wrap-up and Questions

# Introduction





# Future Flood Risk



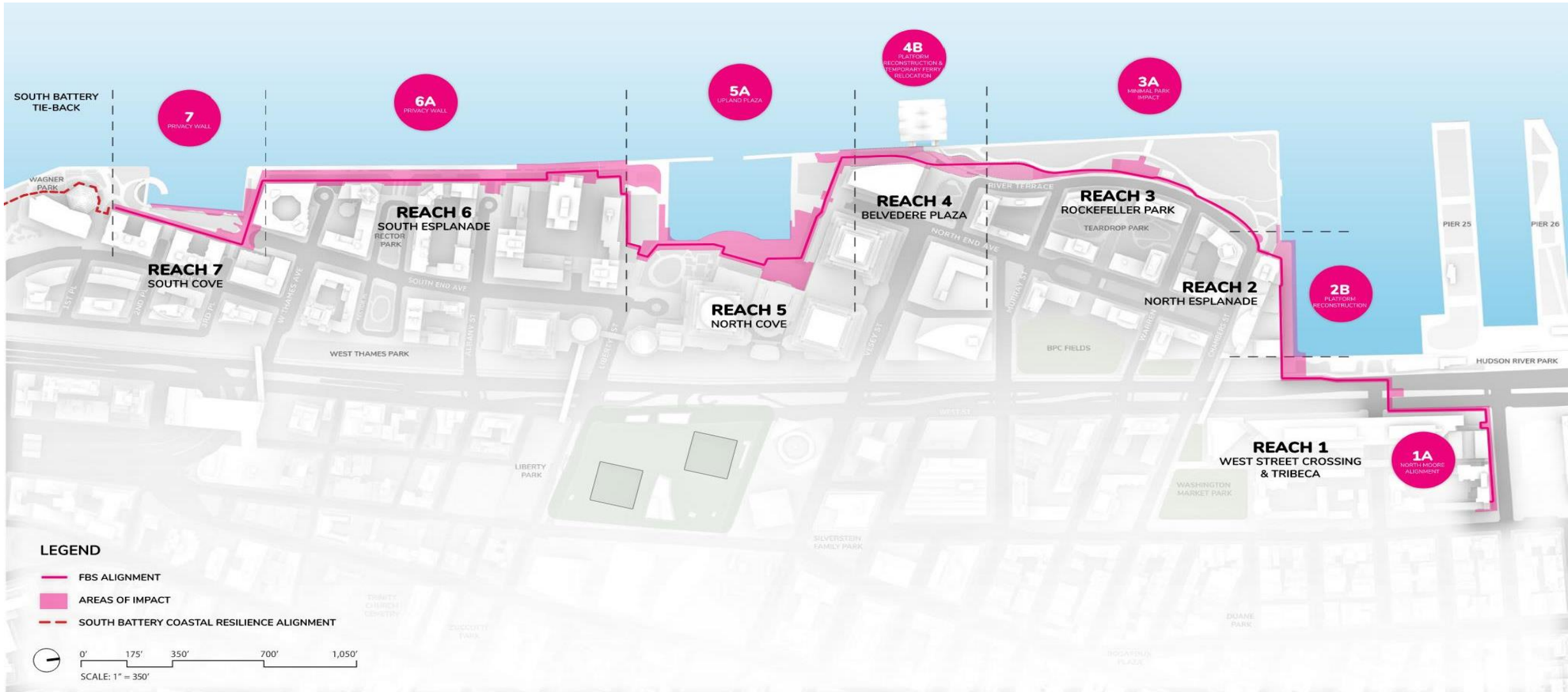
**LEGEND**

SWEL\* DURING A 100-YEAR, EVENT WITH 2.5 FT OF SLR (+14')

\*Still water elevation (swel) does not include wave action  
 \*\*100-year flood is one that statistically has a 1% chance of occurring in any given year

0'    175'    350'    700'

# Flood Barrier System Alignment

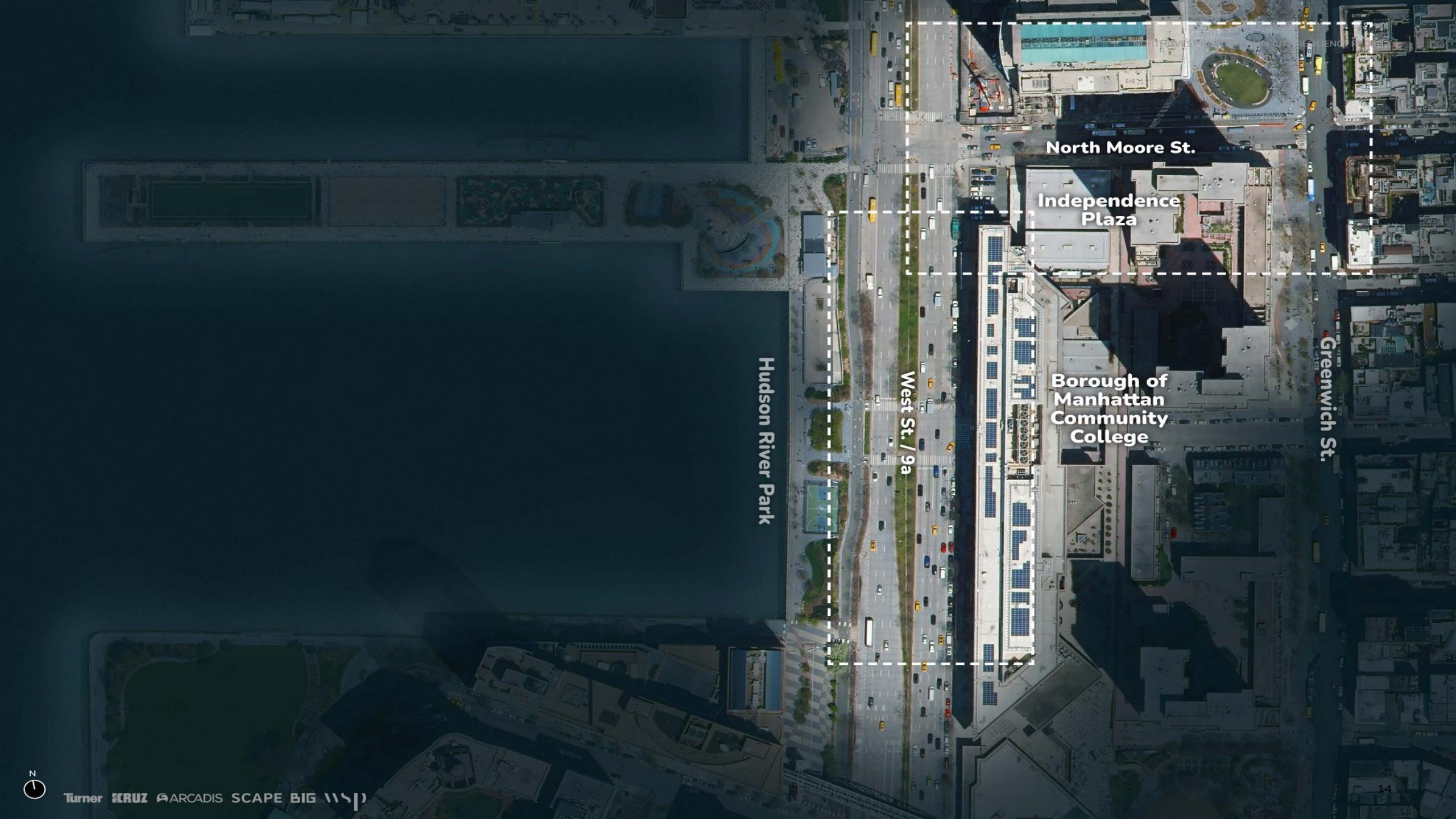


# Reach 1 Update





# REACH 01: TRIBECA / BMCC / HRPK



Hudson River Park

West St. / 9a

Borough of  
Manhattan  
Community  
College

Independence  
Plaza

North Moore St.

Greenwich St.





# Reach 1 West St. | Design Constraints

## Hudson River Park

Pier 25

Hudson River Park

Manhattan Greenway

West St. (South-Bound)

+7'

West St. (North-Bound)







+8'

Harrison St.

Borough of Manhattan  
Community College

N. Moore St.

### LEGEND

-  FLOOD BARRIER SYSTEM (WALL)
-  STORM SEWER
-  WATER PIPE
-  EXISTING PLATFORM
-  EXISTING TREES
-  TREES TO BE REMOVED

0' 20' 40' 100'



\* Area Under Review

# Reach 1 West St. | Design Opportunities

## Hudson River Park

Pier 25

Maintain connection to N. Esplanade.

Maintain N-S connectivity

Hudson River Park

Openings next to crossing to maintain pedestrians' safety.

Manhattan Greenway

Buffer bikers and pedestrians from car traffic.

+7'

West St. (South-Bound)

+8'

West St. (North-Bound)

Maintain connection from Harrison st. to the waterfront.

Harrison St.

Borough of Manhattan Community College

N. Moore St.

--- FBS Wall Alignment

\* Area Under Review



# Reach 1 West Street | Proposed

## Hudson River Park

Pier 25

Hudson River Park

Manhattan Greenway

West St. (South-Bound)

West St. (North-Bound)

Harrison St.

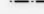
Borough of Manhattan  
Community College

N. Moore St.

Top of Wall:  
+17.5'

Top of Wall:  
+16.5'

### LEGEND

-  FLOOD BARRIER SYSTEM (WALL)
-  FLOOD BARRIER SYSTEM (DEPLOYABLE)
-  EXISTING RELIEVING PLATFORM
-  EXISTING PLATFORM EDGE
-  EXISTING TREES
-  NEW TREES
-  LIMIT OF WORK



\* Area Under Review



# 1A: North Moore Street Alignment

9.5'

ALONG BIKEPATH AND ROADWAY.

Chambers St  
NEXT LEFT  
Murray St

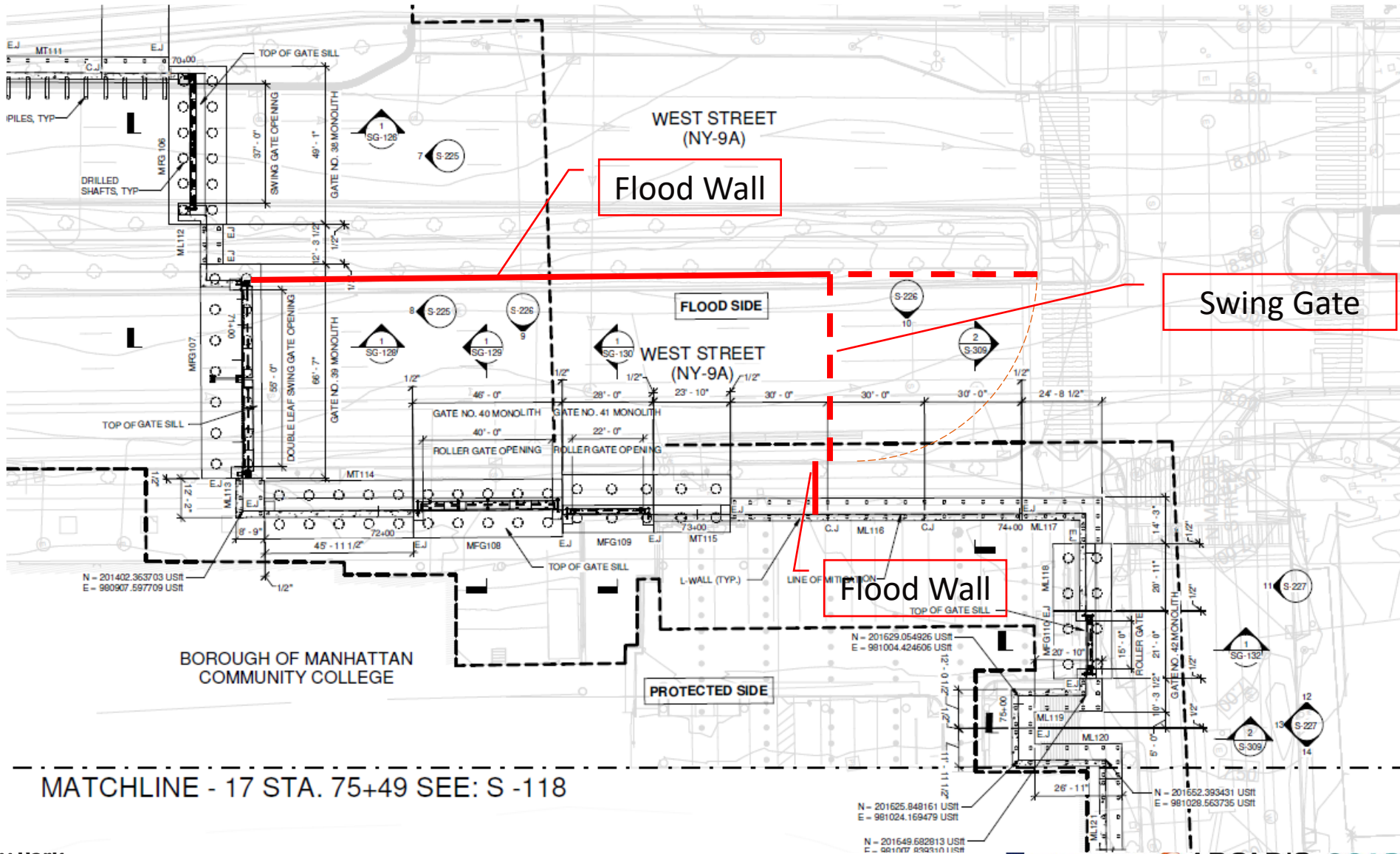
NO  
MOTOR VEHICLES  
E-BIKES  
E-SCOOTERS

STATE  
LAW  
YIELD  
TO  
WALKER  
WITHIN  
CROSSWALK





# Median Alignment Alternative Plan



# Requirements and Questions

- What we've heard:
  - Operations & Maintenance concerns
  - Sight lines & view impacts
  - Circulation (vehicles, bicycles, pedestrians)
  - Coordination with DOT (state and city)
  - Potential for adjacent impacts (coastal modeling)
  - Other impacts to consider: shading, lighting, drainage
- Questions / Discussion

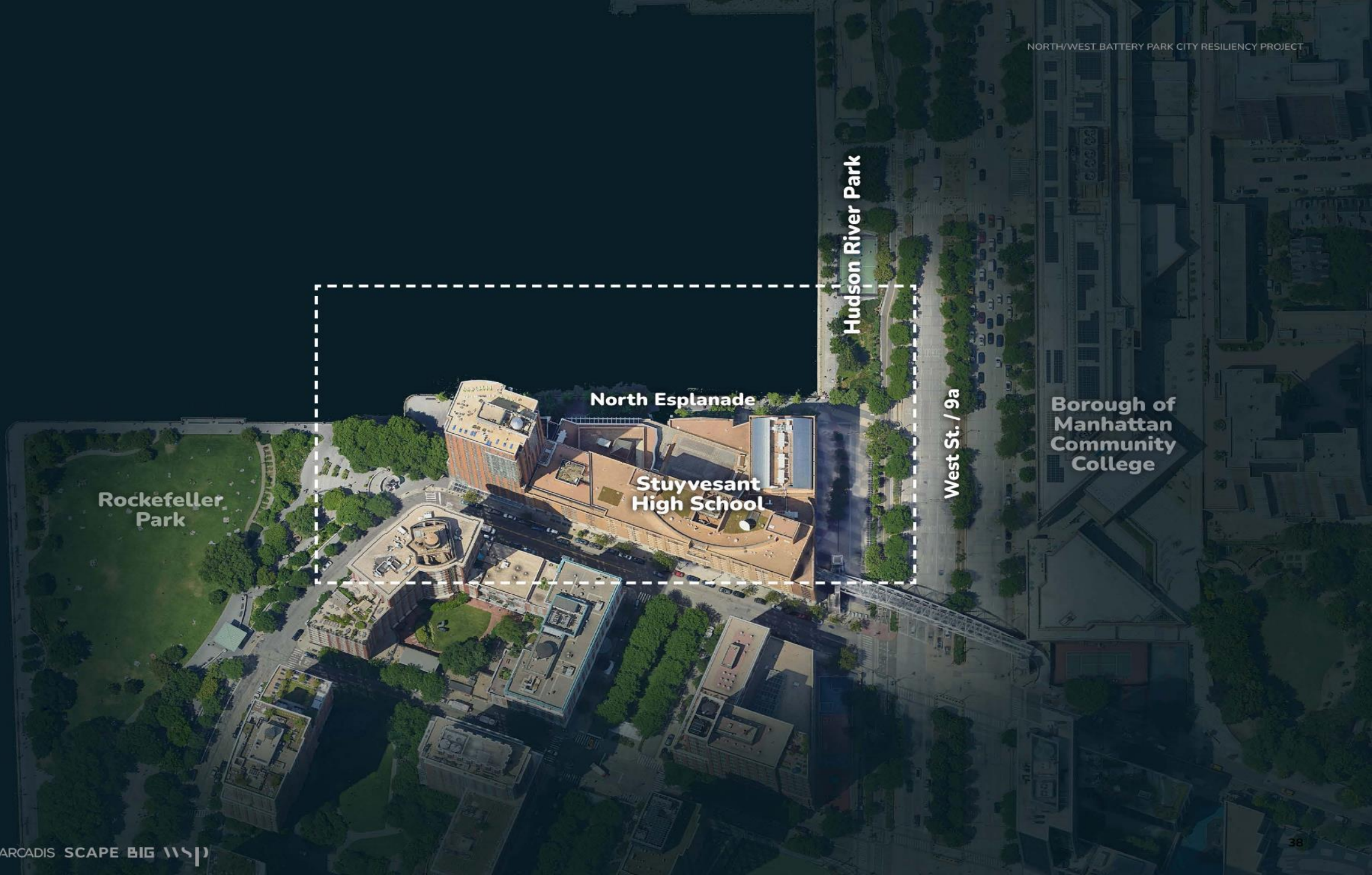


# Reach 2 Review and Discussion



# REACH 02: NORTH ESPLANADE





Rockefeller  
Park

North Esplanade

Stuyvesant  
High School

Hudson River Park

West St. / 9a

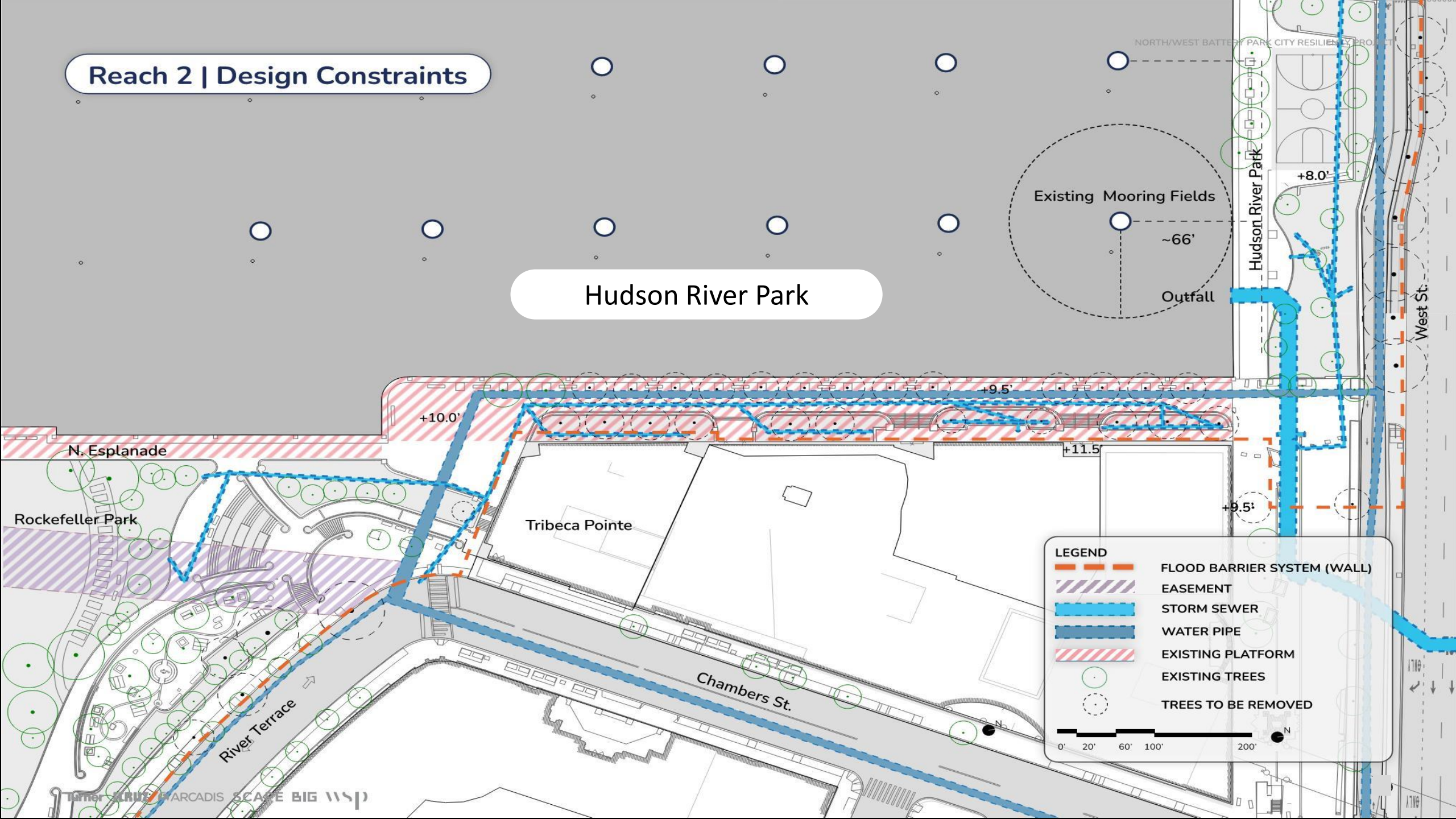
Borough of  
Manhattan  
Community  
College





# Reach 2 | Design Constraints

## Hudson River Park



**LEGEND**

- FLOOD BARRIER SYSTEM (WALL)
- EASEMENT
- STORM SEWER
- WATER PIPE
- EXISTING PLATFORM
- EXISTING TREES
- TREES TO BE REMOVED

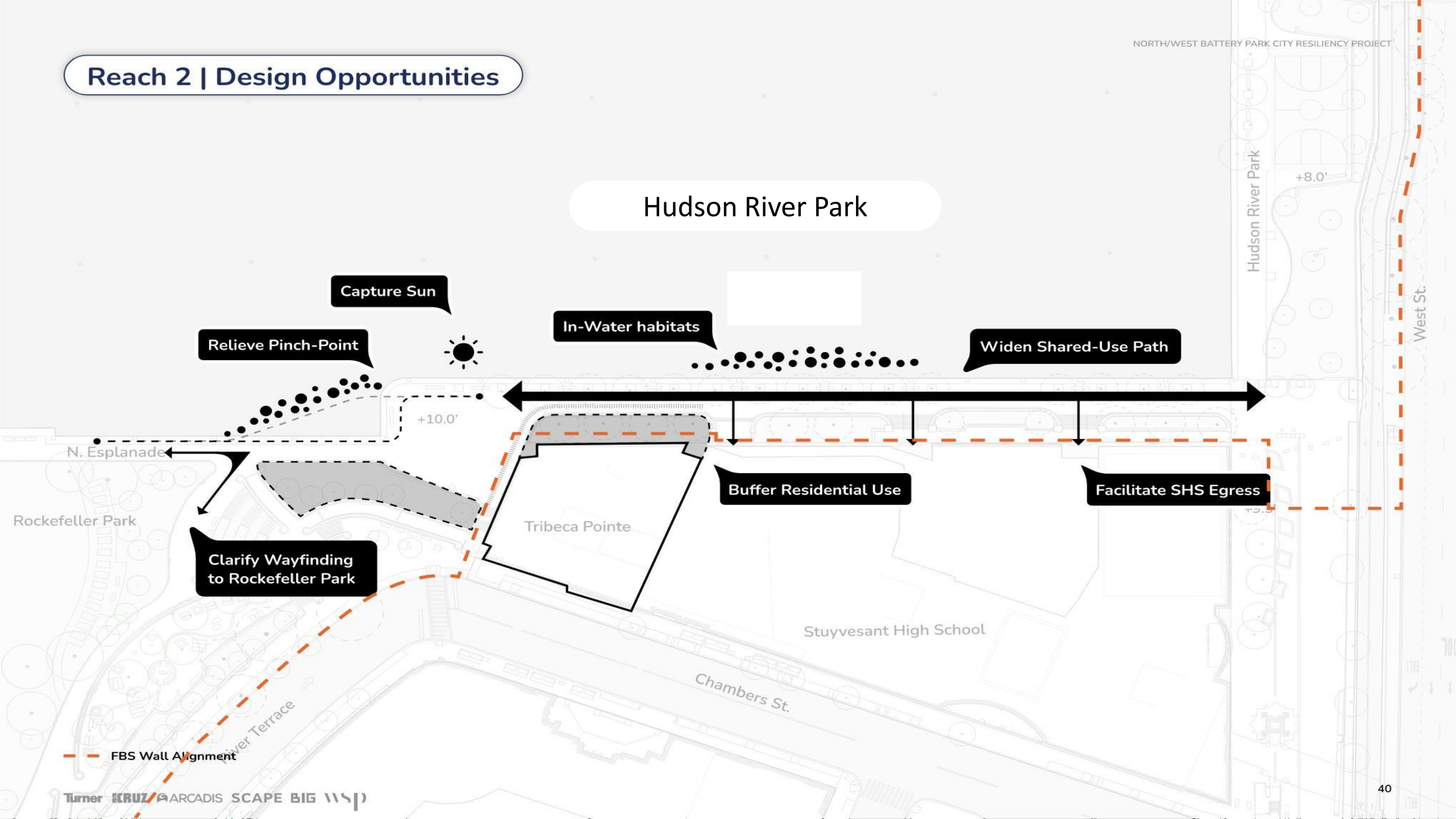
0' 20' 60' 100' 200'

N



# Reach 2 | Design Opportunities

## Hudson River Park



# Reach 2 | Proposed Plan

Existing Platform Area: 19,163 SF  
New Platform Area: 22,681 SF  
Gain Area: 3,518 SF

## Hudson River Park

NORTH/WEST BATTERY PARK CITY RESILIENCY PROJECT



Limit of Work

New Social Space with Views and Sunlight

Green Buffer

Existing Platform Edge

Improve Connection with Hudson River Park

Hudson River Park

+8.0'

Top of Wall: +16.5'

12.5'

15'

12.5'

N. W

Rockefeller Park

Tribeca Pointe

Stuyvesant High School

Chambers St.

River Terrace

West St.

+9.5'

**LEGEND**

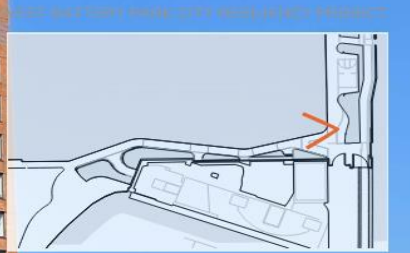
- FLOOD BARRIER SYSTEM (WALL)
- FLOOD BARRIER SYSTEM (DEPLOYABLE)
- EXISTING RELIEVING PLATFORM
- EXISTING PLATFORM EDGE
- EXISTING TREES
- NEW TREES
- LIMIT OF WORK

0' 20' 40' 100'

N



View from Hudson River Park | Existing



+9.5'



# Reach 2 | Proposed Design

Improved Connection with Hudson River Park

+9.5'

+12.5'

+15'

+16.5'

+12.5'

In-Water Habitat Enhancement

Hudson River

Widened Shared-Use Path

Tribeca Pointe

Enhanced Privacy Buffer for Residential Units

FBS Wall  
Materiality under Development

FBS Wall  
Materiality under Development

FBS ROLLER GATE  
Materiality under Development

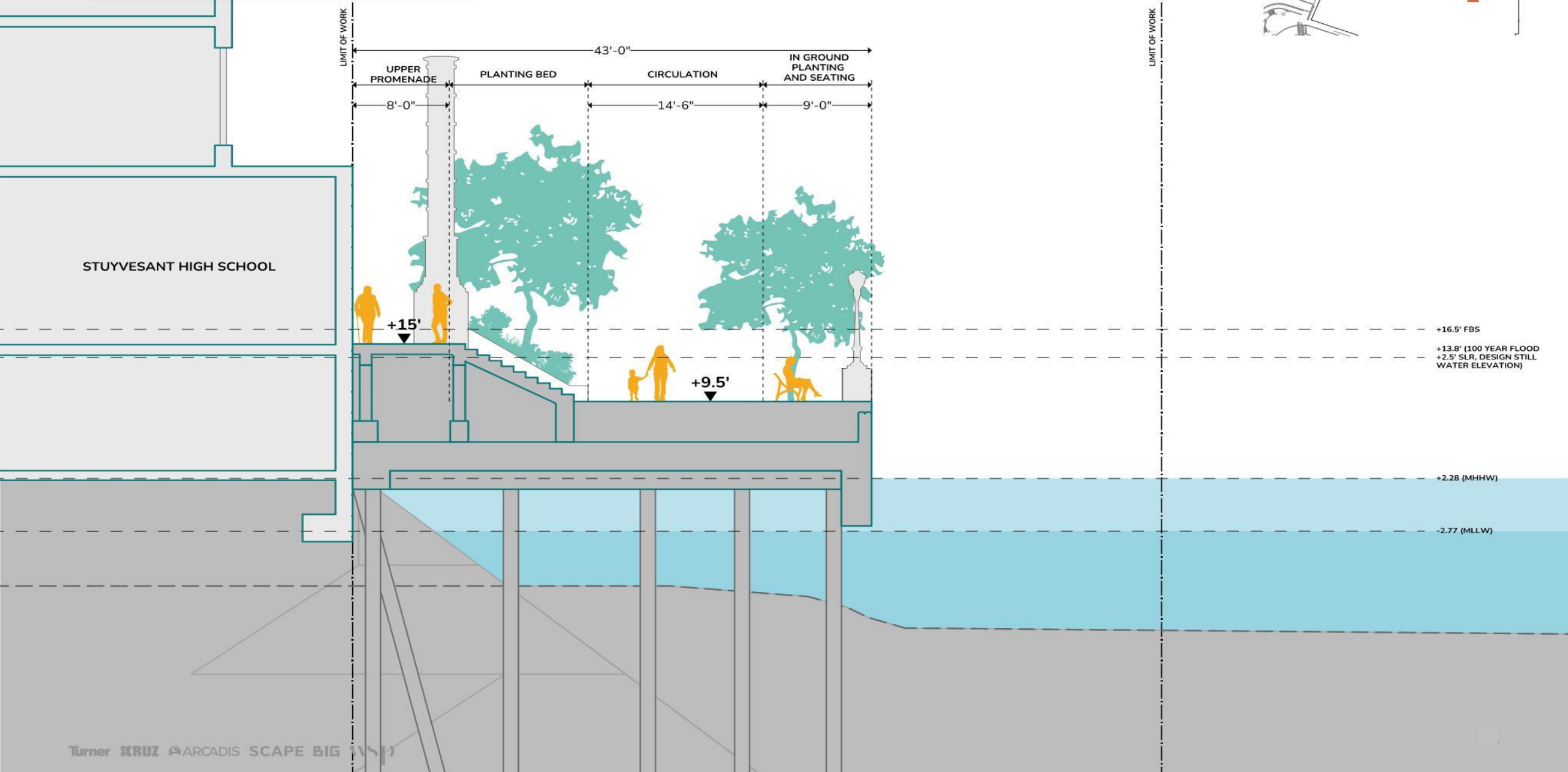
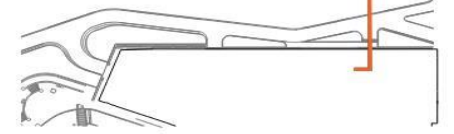
New Social Spaces with Views and Sunlight

+10'

Eco-Tiles



# Reach 2 | Existing Section



STUYVESANT HIGH SCHOOL

+15'

+9.5'

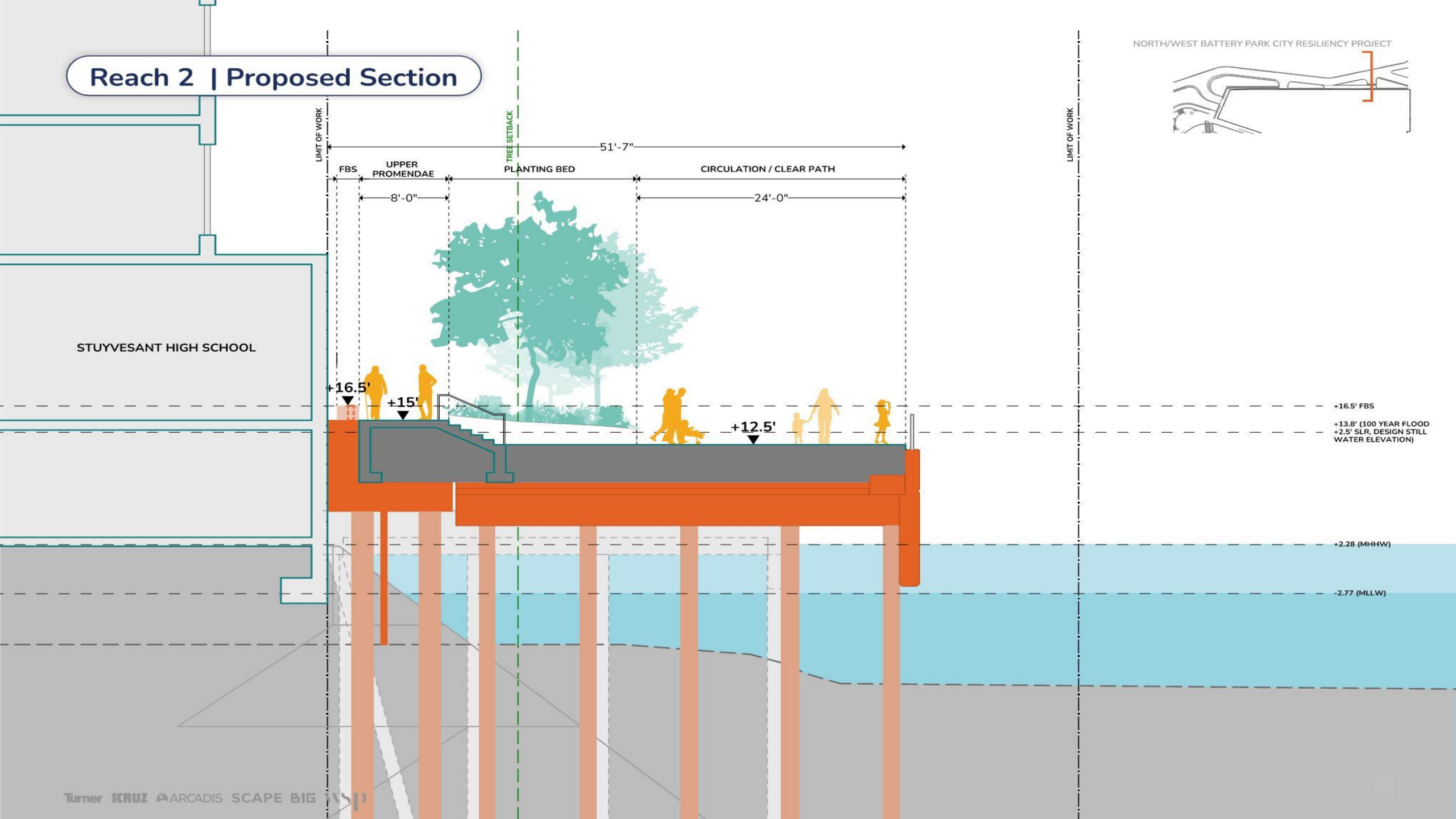
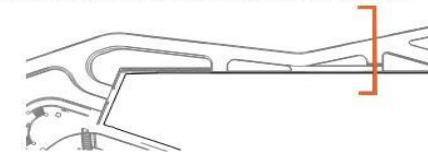
+16.5' FBS

+13.8' (100 YEAR FLOOD  
+2.5' SLR, DESIGN STILL  
WATER ELEVATION)

+2.28 (MHHW)

-2.77 (MLLW)

# Reach 2 | Proposed Section





Coordination

4

# Ongoing Agency Coordination

- HRPK
- NYS DOT
- NYC DOT
- NYC DEP
- USACE
- NYSDEC
- Other Projects



# Agency Coordination - Timeline

- 30 Percent Design Documents June 2023
- 60 Percent Design Documents Late 2023
- Utility Relocation Package Early 2024
- GMP (60 – 90 Percent Design) Mid to Late 2024\*
- Construction Start Late 2024/Early 2025\*

*\*Depending on Permits*

# Wrap-up and Questions

